



WE ARE IB

Collection

AQUARIVA

Article

AV630

Description

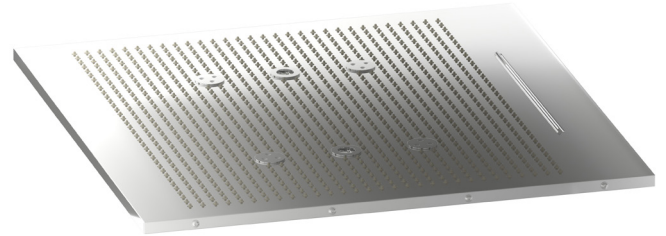
Semi-built in showerhead with rain, waterfall nebulization and chromotherapy

Box Dimensions

705x705x155 mm

Weight

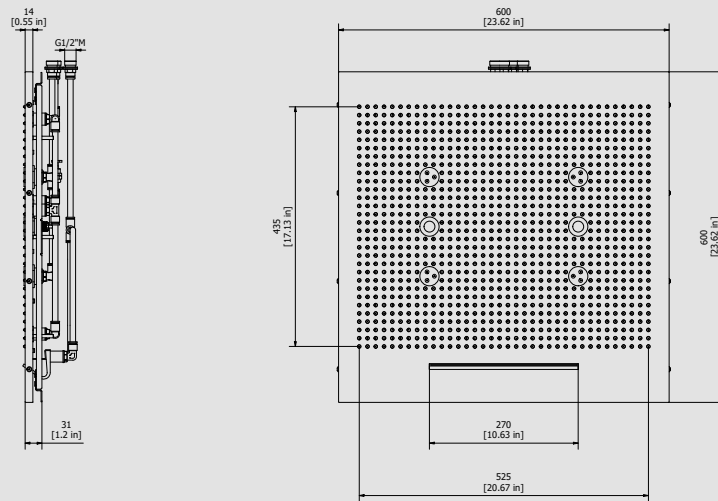
21 kg



Finishes

- **CC**
CHROME
- **PL**
PLATINUM
- **SS**
BRUSHED
NICKEL
- **ON**
NATURAL
BRASS
- **BO**
MATT
WHITE
- **NP**
MATT
BLACK
- **CF**
BLACK
CHROME
- **CS**
BRUSHED
BLACK
CHROME
- **II**
PALE
GOLD
- **IS**
BRUSHED
PALE GOLD
- **RS**
ROSE
GOLD
- **SR**
BRUSHED
ROSE GOLD
- **OO**
GOLD
- **OS**
BRUSHED
GOLD
- **RR**
ANTIQUÉ
COPPER
- **BB**
ANTIQUÉ
BRONZE
- **MB**
MODERN
BRONZE

Dimensions



Cartridge

-

Threaded fitting

Threaded fitting G1/2" M

Aerator

-

Flow Rate (+/-10%)

1 BAR	2 BAR	3 BAR
18 l\m	19 l\m	22 l\m

Production

Main body is a single casted pieces

Material

BRASS
According to CuZn35Pb2Al-B (CB752S)
Max Lead content: 1.36%

IB RUBINETTERIE s.p.a
via dei Pianotti 3/5
25068 Sarezzo (BS) - Italy -

T. +39 030 802101
F. +39 030 803097
info@weareib.it

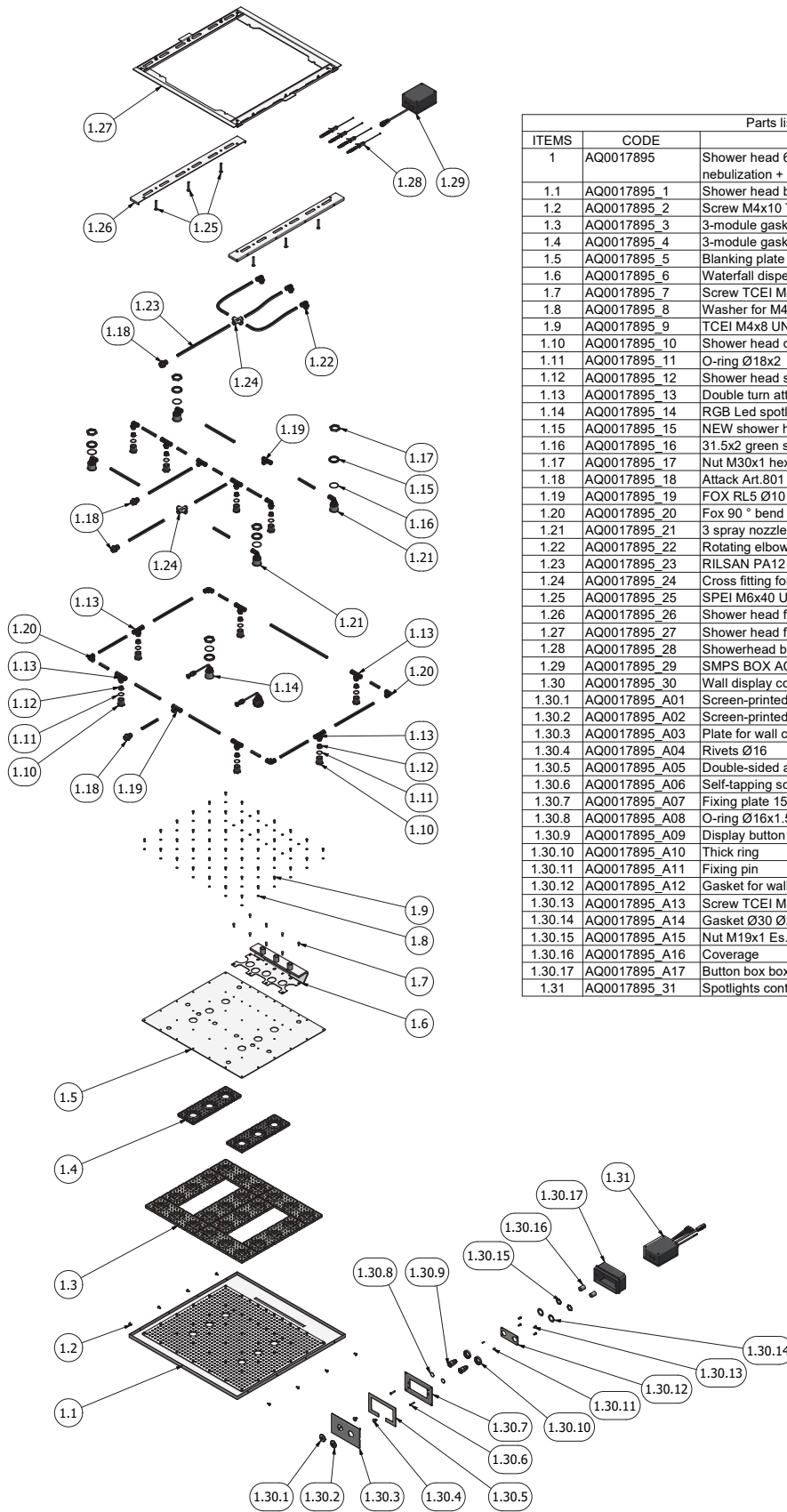
P.IVA 01785230986
capitale sociale
€420.000,00 i.v.

www.weareib.it





WE ARE IB



Parts list			
ITEMS	CODE	DESCRIPTION	QTA
1	AQ0017895	Shower head 600x600 rain + waterfall + nebulization + 2 LED RGBW	1
1.1	AQ0017895_1	Shower head box 600x600	1
1.2	AQ0017895_2	Screw M4x10 TB with flange Ø9.3	8
1.3	AQ0017895_3	3-module gasket	8
1.4	AQ0017895_4	3-module gasket NEW	2
1.5	AQ0017895_5	Blanking plate 550x465	1
1.6	AQ0017895_6	Waterfall dispensing spout	1
1.7	AQ0017895_7	Screw TCEI M4x10 UNI 5931	8
1.8	AQ0017895_8	Washer for M4 screws DIN6798A	50
1.9	AQ0017895_9	TCEI M4x8 UNI 5931 screw	42
1.10	AQ0017895_10	Shower head connection	10
1.11	AQ0017895_11	O-ring Ø18x2	10
1.12	AQ0017895_12	Shower head supply connection	10
1.13	AQ0017895_13	Double turn attack. RL32 G3 / 8 "M Ø10	8
1.14	AQ0017895_14	RGB Led spotlight with cable for PCB and PG7	2
1.15	AQ0017895_15	NEW shower head sealing ring	6
1.16	AQ0017895_16	31.5x2 green silicone O-ring	6
1.17	AQ0017895_17	Nut M30x1 hex 36 H6	6
1.18	AQ0017895_18	Attack Art.801 G1/2" M Ø10 with OR	4
1.19	AQ0017895_19	FOX RL5 Ø10 intermediate tee	3
1.20	AQ0017895_20	Fox 90 ° bend RL21 tube Ø10	4
1.21	AQ0017895_21	3 spray nozzle	4
1.22	AQ0017895_22	Rotating elbow RL31 G3 / 8 "Ø10 with OR	5
1.23	AQ0017895_23	RILSAN PA12 J7 Ø10xØ8 pipe	1
1.24	AQ0017895_24	Cross fitting for tube Ø10	2
1.25	AQ0017895_25	SPEI M6x40 UNI 5933 screw	6
1.26	AQ0017895_26	Shower head fixing profile	2
1.27	AQ0017895_27	Shower head fixing bracket	1
1.28	AQ0017895_28	Showerhead bracket fixing package	1
1.29	AQ0017895_29	SMPS BOX AQUABEAT control unit	1
1.30	AQ0017895_30	Wall display control	1
1.30.1	AQ0017895_A01	Screen-printed power on display button	1
1.30.2	AQ0017895_A02	Screen-printed chromotherapy button	1
1.30.3	AQ0017895_A03	Plate for wall control display	1
1.30.4	AQ0017895_A04	Rivets Ø16	2
1.30.5	AQ0017895_A05	Double-sided adhesive gasket	1
1.30.6	AQ0017895_A06	Self-tapping screw Ø3.5 TS	2
1.30.7	AQ0017895_A07	Fixing plate 150x89	1
1.30.8	AQ0017895_A08	O-ring Ø16x1.5	2
1.30.9	AQ0017895_A09	Display button	2
1.30.10	AQ0017895_A10	Thick ring	2
1.30.11	AQ0017895_A11	Fixing pin	2
1.30.12	AQ0017895_A12	Gasket for wall control display	1
1.30.13	AQ0017895_A13	Screw TCEI M4x8	4
1.30.14	AQ0017895_A14	Gasket Ø30 Ø21	2
1.30.15	AQ0017895_A15	Nut M19x1 Es.22 H3	2
1.30.16	AQ0017895_A16	Coverage	2
1.30.17	AQ0017895_A17	Button box box	1
1.31	AQ0017895_31	Spotlights control box	1



WE ARE IB

WARRANTY

All IB Rubinetterie SpA products are warranted for 10 years from the date of purchase, for the following cases:

- Defects of casting, porosity and chrome plating.
- Operating defects caused by incorrect fabrication.

The warranty provides for repair or replacement of products with fabrication defects recognized by our technical office. There is no other type of compensation anche the merchandise must be returned FOB our warehouse. The warranty only cover surface defects (scartches, dings, etc.) on fitting that have not been installed and used, returned in its original packaging with all components. O-ring, gasket seals and components subject to wear proportional to use are warranted for 2 years.

The warranty is void in the following cases:

Error installing and putting the product into service.

Deterioration of finisched surfaces due to use of cleaning products containing acids or abrasive substances.

Deterioration of surface with finishes other than chrome plating. Their durability is, in fact, dependent on the user's care and gentleness of use.

Deterioration of the fitting due incorrect installation.

Improper repairs and maintenance performed without the company's prior authorization.

The warranty from IB Rubinetterie SpA is not renewable.

Cleaning

We recommended cleaning the finish surfaces with water and soap, using a soft cloth.

Do not use detergents that cointain hydrochloric acid or abrasive substances.