

Collection

AQUARIVA

Article

AV320

Description

Semi-built in showerhead with rain

Box Dimensions

455x455x155 mm

Weight

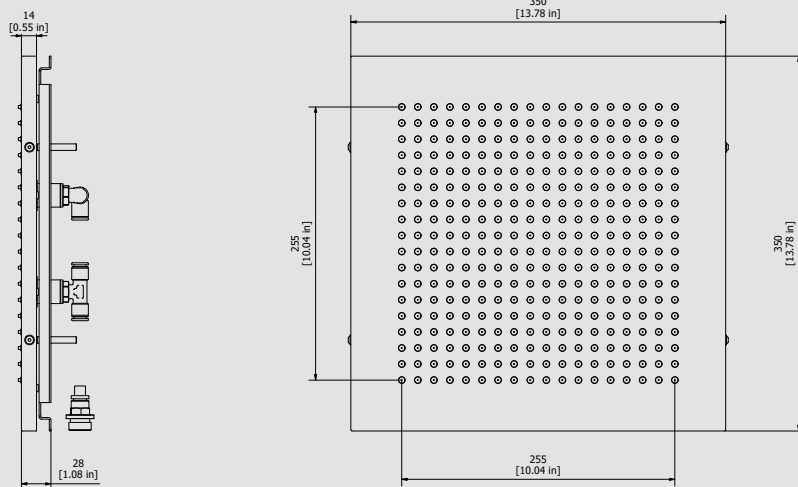
7 kg



Finishes

- **CC**
CHROME
- **PL**
PLATINUM
- **SS**
BRUSHED
NICKEL
- **ON**
NATURAL
BRASS
- **BO**
MATT
WHITE
- **NP**
MATT
BLACK
- **CF**
BLACK
CHROME
- **CS**
BRUSHED
BLACK
CHROME
- **II**
PALE
GOLD
- **IS**
BRUSHED
PALE GOLD
- **RS**
ROSE
GOLD
- **SR**
BRUSHED
ROSE GOLD
- **OO**
GOLD
- **OS**
BRUSHED
GOLD
- **RR**
ANTIQUÉ
COPPER
- **BB**
ANTIQUÉ
BRONZE
- **MB**
MODERN
BRONZE

Dimensions



Cartridge

-

Threaded fitting

Threaded fitting G1/2" M

Aerator

-

Flow Rate (+/-10%)

1 BAR	2 BAR	3 BAR
9 l\m	10.5 l\m	12 l\m

Production

Main body is a single casted pieces

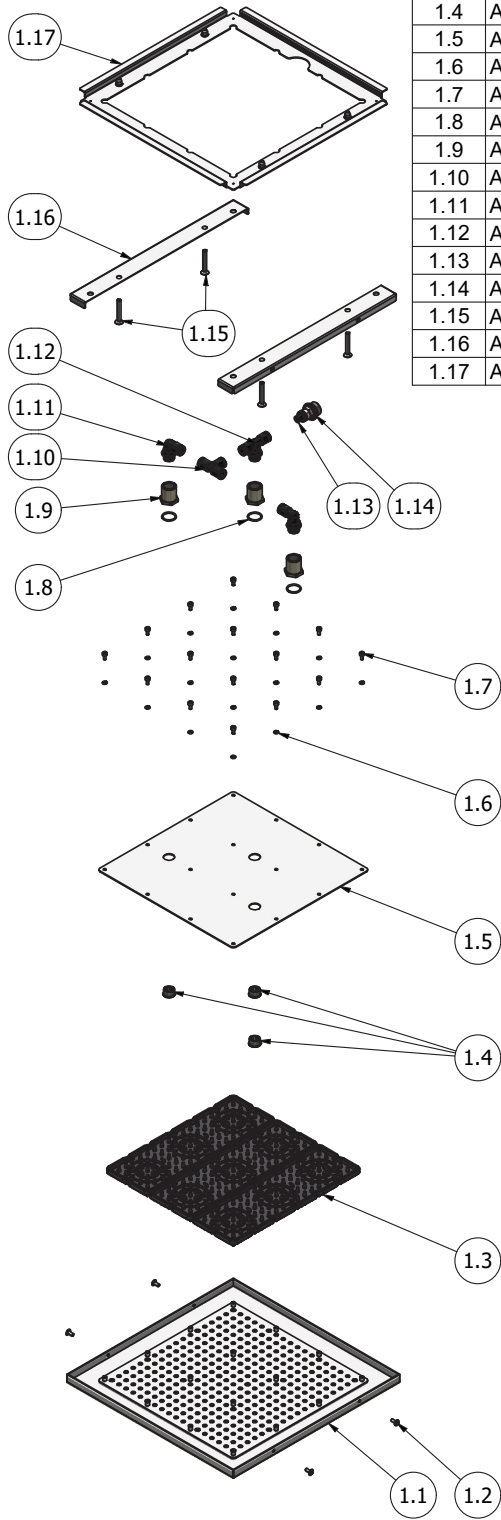
Material

BRASS
According to CuZn35Pb2Al-B (CB752S)
Max Lead content: 1.36%



WE ARE IB

Parts list				
ITEMS	CODE	DESCRIPTION	FIN	QTÀ
1	AQ0017897	Shower head 350x350 rain	-	1
1.1	AQ0017897_1	Shower head box 350x350 rain	F	1
1.2	AQ0017897_2	TB screw M4x10 with flange Ø9.3	-	4
1.3	AQ0017897_3	3 modules gasket	-	3
1.4	AQ0017897_4	Shower head supply connection	-	3
1.5	AQ0017897_5	NEW closing plate 285x285	F	1
1.6	AQ0017897_6	Washer for M4 screws DIN 6798 A	-	16
1.7	AQ0017897_7	Screw M4x8 TCEI UNI5931	-	16
1.8	AQ0017897_8	O-ring 18x2	-	3
1.9	AQ0017897_9	Shower head connection	-	3
1.10	AQ0017897_10	Fox RL5 intermediate T fitting Ø10	-	1
1.11	AQ0017897_11	Revolving elbow RL31 G3 / 8 "M Ø10	-	2
1.12	AQ0017897_12	Double swivel connection RL32 G3 / 8 "M Ø10	-	1
1.13	AQ0017897_13	RILSAN PA12 J7 Ø10 Ø8 pipe	-	1
1.14	AQ0017897_14	Articulated connection 801 G1/2" M Ø10	-	1
1.15	AQ0017897_15	SPEI M6x40UNI 5933 screw	-	4
1.16	AQ0017897_16	350 shower head fixing profile with rivets	-	2
1.17	AQ0017897_17	Bracket with rivets for fixing 350 rain shower head	-	1





WE ARE IB

WARRANTY

All IB Rubinetterie SpA products are warranted for 10 years from the date of purchase, for the following cases:

- Defects of casting, porosity and chrome plating.
- Operating defects caused by incorrect fabrication.

The warranty provides for repair or replacement of products with fabrication defects recognized by our technical office. There is no other type of compensation anche the merchandise must be returned FOB our warehouse. The warranty only cover surface defects (scartches, dings, etc.) on fitting that have not been installed and used, returned in its original packaging with all components. O-ring, gasket seals and components subject to wear proportional to use are warranted for 2 years.

The warranty is void in the following cases:

Error installing and putting the product into service.

Deterioration of finisched surfaces due to use of cleaning products containing acids or abrasive substances.

Deterioration of surface with finishes other than chrome plating. Their durability is, in fact, dependent on the user's care and gentleness of use.

Deterioration of the fitting due incorrect installation.

Improper repairs and maintenance performed without the company's prior authorization.

The warranty from IB Rubinetterie SpA is not renewable.

Cleaning

We recommended cleaning the finish surfaces with water and soap, using a soft cloth.

Do not use detergents that cointain hydrochloric acid or abrasive substances.