



WE ARE IB

Collection

# BATLO'

Article

## BI250

Description

Wall mounted bath filler complete with shower kit.

Box Dimensions

360x220x150 mm

Weight

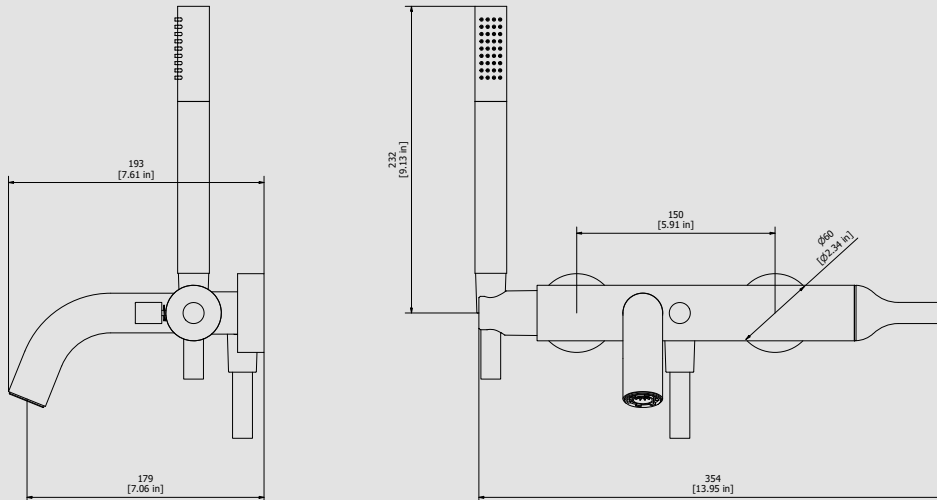
4.7 kg

Finishes

- **CC** CHROME
- **PL** PLATINUM
- **SS** BRUSHED NICKEL
- **ON** NATURAL BRASS
- **BO** MATT WHITE
- **NP** MATT BLACK
- **CF** BLACK CHROME
- **CS** BRUSHED BLACK CHROME
- **II** PALE GOLD
- **IS** BRUSHED PALE GOLD
- **RS** ROSE GOLD
- **SR** BRUSHED ROSE GOLD
- **OO** GOLD
- **OS** BRUSHED GOLD
- **RR** ANTIQUE COPPER
- **BB** ANTIQUE BRONZE
- **MB** MODERN BRONZE



Dimensions



Cartridge

**Ceramic cartridge Ø35**

Threaded fitting

**G1/2" male**

Aerator

**Cachè aerator M24x1**

Flow Rate (+/-10%)

<b>1 BAR</b>	<b>2 BAR</b>	<b>3 BAR</b>
<b>10 l\m</b>	<b>14 l\m</b>	<b>18 l\m</b>

Production

**Main body is a single casted pieces**

Material

**BRASS**  
According to CuZn42 (CW510L)  
Max Lead content: 0.2%

IB RUBINETTERIE s.p.a  
via dei Pianotti 3/5  
25068 Sarezzo (BS) - Italy -

T. +39 030 802101  
F. +39 030 803097  
info@weareib.it

P.IVA 01785230986  
capitale sociale  
€420.000,00 i.v.

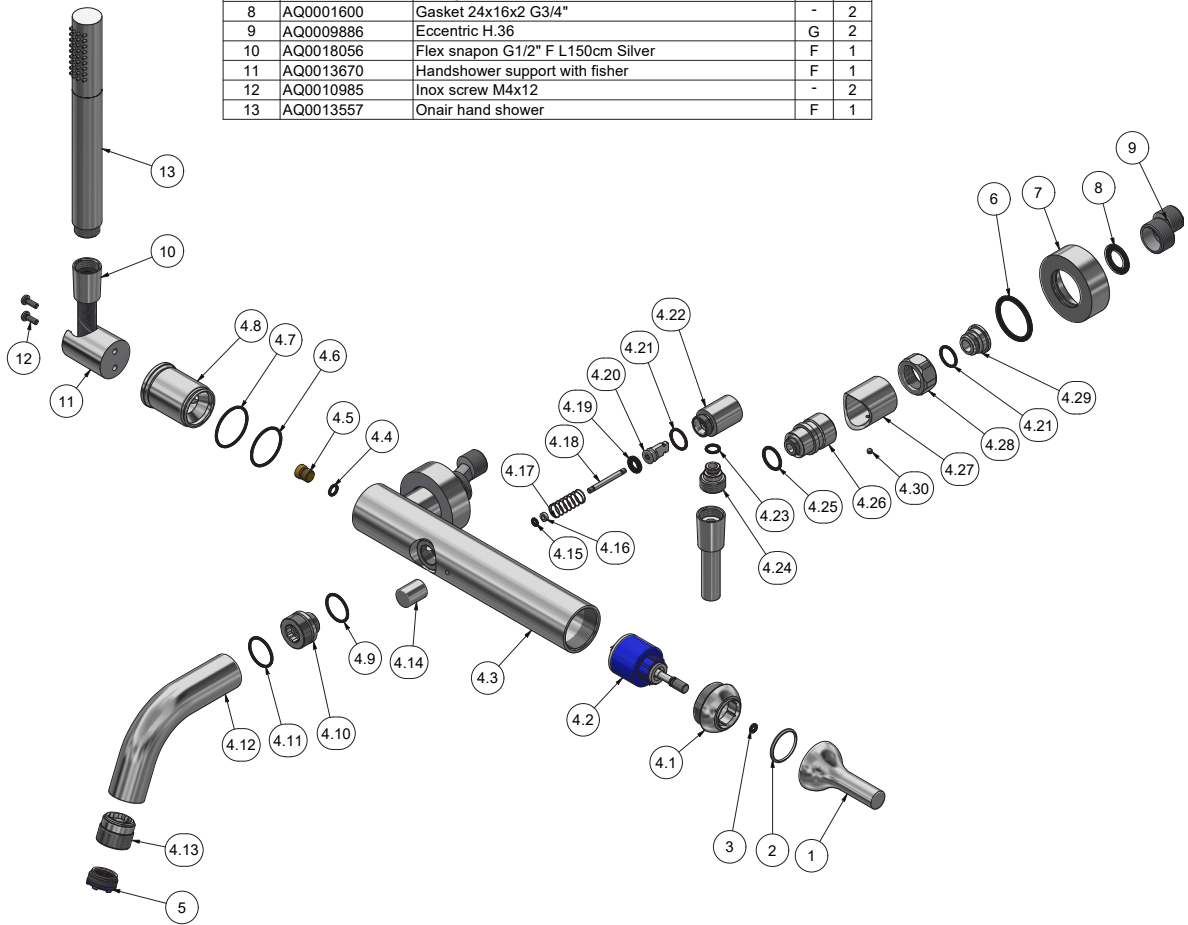
www.weareib.it





WE ARE IB

Parts list				
ITEMS	CODE	DESCRIPTION	FIN	QTA
1	AQ0010957	Lever Ø42 Ø16 H70 M8	F	1
2	AQ0010962	Antifriction ring Ø29.5 Ø26.2 H1.9	-	1
3	AQ0001410	OR 4.2x1.9 NBR 70 SH	-	1
4	CPKB1250CCX15	Preassembled external bath mixer	F	1
4.1	AC0010790	Cartridge fixing nut M37x1.5 H22.5 Ø42	F	1
4.2	AQ0010964	Ceramic cartridge Ø35 with rod M8	-	1
4.3	AC0010795	External bath body	F	1
4.4	AQ0001330	OR 6.75x1.78 NBR 70 SH	-	1
4.5	AS0010770	Plug M10x1 H12	G	1
4.6	AQ0009816	OR 31.47x1.78 NBR 70 SH	-	1
4.7	AQ0008026	OR 33.05x1.78 NBR 70 SH	-	1
4.8	AC0012332	Plug for body Ø39 H48.2 M14x1.5 sx	F	1
4.9	AQ0006637	OR 21.95x1.78 NBR 70 SH	-	1
4.10	AN0009712	Insert M27x1 M18x1	N	1
4.11	AQ0009815	OR 23.52x1.78 NBR 70 SH	-	1
4.12	AC0009709	Spout-out Ø30 L116	F	1
4.13	AN0010792	Seat for perlator M28x1 M24x1	N	1
4.14	AC0010793	Knob for diverter Ø16 H20 M4	F	1
4.15	AQ0007122	OR 3.69x1.78 NBR 70 SH	-	1
4.16	AQ0009727	Antifriction ring Ø7 H2.5	-	1
4.17	AQ0010322	Diverter's spring	G	1
4.18	AC0009716	Diverter's rod Ø4 M4 H41	F	1
4.19	AQ0009380	OR 7.52x3.53 NBR 70 SH	-	1
4.20	AN0009664	Diverter pan for bath shower Ø10.8 H22	N	1
4.21	AQ0004600	OR 15.6x1.78 NBR 70 SH	-	3
4.22	AC0010797	Elbow M18X1 M12X1	F	1
4.23	AQ0001340	OR 8.73x1.78 NBR 70 SH	-	1
4.24	AC0010794	Shower connection piece G1/2" M12x1 H20.5 CH12	F	1
4.25	AQ0009841	OR 17x2 NBR 70 SH	-	2
4.26	AN0009713	Seal extension for bath shower M14x1.5 SX	N	2
4.27	AC0009710	Seal sleeve for bath shower Ø32 Ø26.8 H36.6	F	2
4.28	AC0000710	Fixing nut G3/4" H14 CH30	F	2
4.29	AN0001931	Threaded connection piece M18x1.5 L H15.8	N	2
4.30	AQ0001082	Grubscrew M4x4 cone point	-	2
5	AQ0010587	Perlator cahcè M24x1 antispash (40.9300.010)	-	1
6	AQ0009704	OR 32.93x3.53 NBR 70 SH	-	2
7	AC0010031	Sliding rosette Ø59.5 H20	F	2
8	AQ0001600	Gasket 24x16x2 G3/4"	-	2
9	AQ0009886	Eccentric H.36	G	2
10	AQ0018056	Flex snapon G1/2" F L150cm Silver	F	1
11	AQ0013670	Handshower support with fisher	F	1
12	AQ0010985	Inox screw M4x12	-	2
13	AQ0013557	Onair hand shower	F	1



IB RUBINETTERIE s.p.a  
via dei Pianotti 3/5  
25068 Sarezzo (BS) - Italy -

T. +39 030 802101  
F. +39 030 803097  
info@weareib.it

P.IVA 01785230986  
capitale sociale  
€420.000,00 i.v.

www.weareib.it





WE ARE IB

### **WARRANTY**

All IB Rubinetterie SpA products are warranted for 10 years from the date of purchase, for the following cases:

- Defects of casting, porosity and chrome plating.
- Operating defects caused by incorrect fabrication.

The warranty provides for repair or replacement of products with fabrication defects recognized by our technical office. There is no other type of compensation anche the merchandise must be returned FOB our warehouse. The warranty only cover surface defects (scartches, dings, etc.) on fitting that have not been installed and used, returned in its original packaging with all components. O-ring, gasket seals and components subject to wear proportional to use are warranted for 2 years.

#### **The warranty is void in the following cases:**

Error installing and putting the product into service.

Deterioration of finished surfaces due to use of cleaning products containing acids or abrasive substances.

Deterioration of surface with finishes other than chrome plating. Their durability is, in fact, dependent on the user's care and gentleness of use.

Deterioration of the fitting due incorrect installation.

Improper repairs and maintenance performed without the company's prior authorization.

The warranty from IB Rubinetterie SpA is not renewable.

#### **Cleaning**

We recommended cleaning the finish surfaces with water and soap, using a soft cloth.

Do not use detergents that cointain hydrochloric acid or abrasive substances.