



WE ARE IB

Collection

# INDUSTRIA

Article

## ID397

Description

Three holes bath filler with overflow connection.

Box Dimensions

370 x 270 x 80 mm

Weight

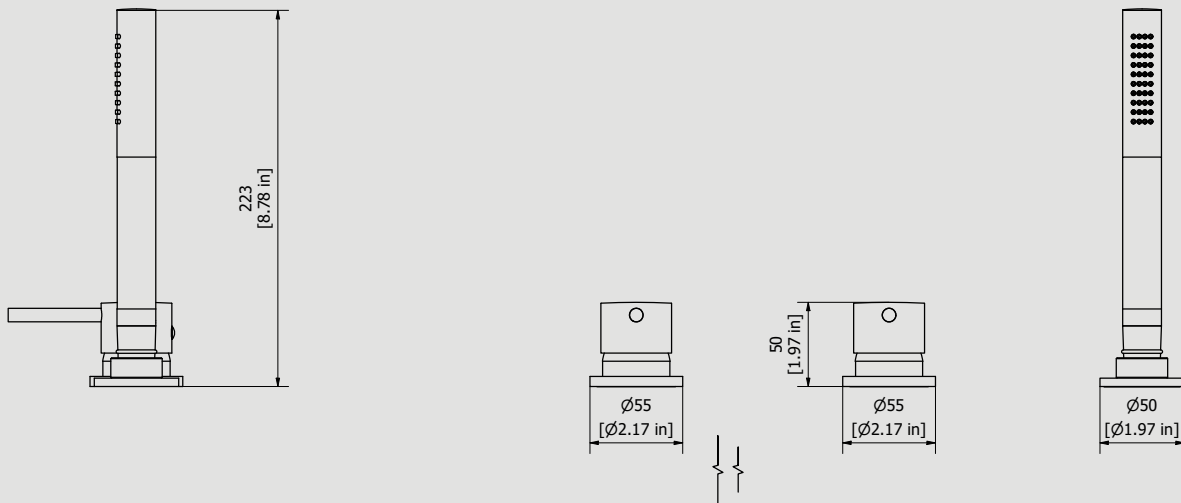
3.2 kg

Finishes

- **CC**  
CHROME
- **CF**  
BLACK CHROME
- **OO**  
GOLD
- **MB**  
MODERN BRONZE
- **SS**  
BRUSHED NICKEL
- **CS**  
BRUSHED BLACK CHROME
- **BO**  
MATT WHITE
- **NP**  
MATT BLACK
- **IS**  
BRUSHED PALE GOLD
- **OS**  
BRUSHED GOLD
- **II**  
PALE GOLD
- **RR**  
ANTIQUÉ COPPER
- **RS**  
ROSE GOLD
- **ON**  
NATURAL BRASS
- **SR**  
BRUSHED ROSE GOLD
- **PL**  
PLATINUM



Dimensions



Cartridge

Ø35 ceramic cartridge

Hoses

Inox hoses G1/2" female 300 mms long

Aerator

M24x1

Flow Rate (+/-10%)

<b>1 BAR</b> 9.3 l/min	<b>2 BAR</b> 13.2 l/min	<b>3 BAR</b> 16.2 l/min
---------------------------	----------------------------	----------------------------

Production

Main body is a single hot stamped pieces

Material

**BRASS**  
According to CuZn42 (CW510L)  
Max Lead content: 0.2%

IB RUBINETTERIE s.p.a  
via dei Pianotti 3/5  
25068 Sarezzo (BS) - Italy -

T. +39 030 802101  
F. +39 030 803097  
info@weareib.it

P.IVA 01785230986  
capitale sociale  
€420.000,00 i.v.

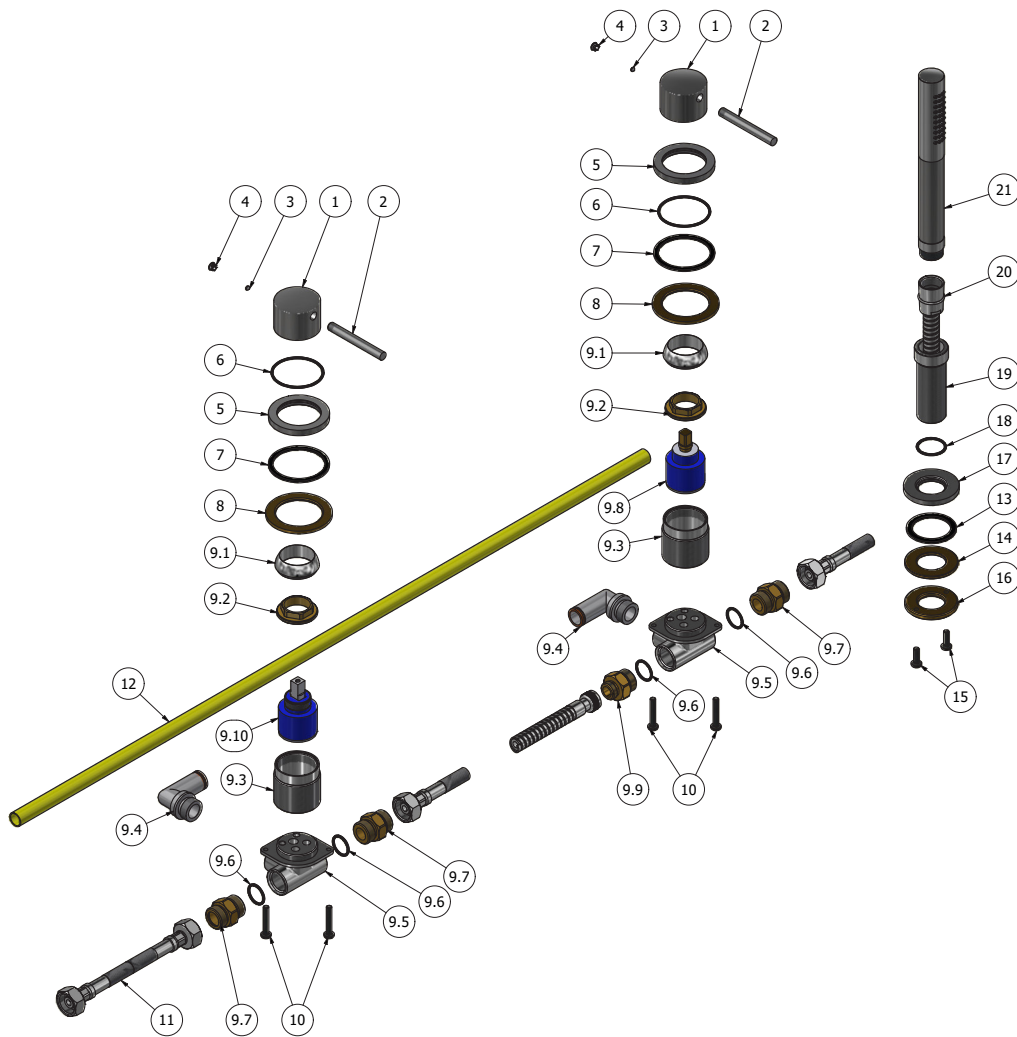
www.weareib.it





WE ARE IB

ELENCO PARTI			
ELEMENTO	CODICE	DESCRIZIONE	QTÀ
1	AC0012840	Maniglia Ø42 H30 zigrinata	2
2	AC0007091	Leva Ø8 L67	2
3	AQ0013221	Grano inox M4x3 p.c.	2
4	AQ0006650	Placchetta cromata Ø7	2
5	AC0012853	Anello di fissaggio Ø55 M42x1.5 zigrinato	2
6	AQ0010584	OR 44.17x1.78 NBR 70 SH	2
7	AQ0011028	Guarnizione piana Ø55x47x2	2
8	AS0011661	Anello supporto Ø60 Ø42.2 H3	2
9	CPMT396CC-1	Premontato bordovasca	1
9.1	AQ0003630	Cappuccio coprighiera M37 Ø41 H15 ABS	2
9.2	AQ0001040	Ghiera prearticcia M37x1.5 H9	2
9.3	AC0011662	Anello M42x1.5 M37x1.5 Ø40 H40.7	2
9.4	AQ0013713	Raccordo a L G1/2" D14 (2031019)	2
9.5	AQCT10369	Corpo incasso doccia M37x1.5 G1/2"	2
9.6	AQ0004630	OR 17.16x1.78 NBR 70 SH	4
9.7	AS0010301	Nipple 1/2" M-M c/sede valvola	3
9.8	AQ0013143	Cartuccia Ø35 senza distributore KDZ HTG	1
9.9	AS0011227	Nipple G1/2" M G3/8" M H28 c/sede valv N	1
9.10	AQ0004095	Cartuccia ceramica Ø35 9x9 (K35A)	1
10	AQ0009153	Vite inox M5x30 ISO 7045	4
11	AQ0006540	Flex inox G1/2" F G1/2" F L300	2
12	AQ0013714-1	Tube Rislán PA11 DIN 74324 Ø14xØ12 L80 cm	1
13	AQ0008013	Guarnizione piana 45x35x2	2
14	AS0010697	Rondella Ø48x26.5x3	1
15	AQ0010358	Vite inox M5x16 ISO 7045	2
16	AS0010698	Ghiera W26x19F fori M5	1
17	AC0012729	Basetta Ø50 H5 zigrinato	1
18	AQ0009815	OR 23.52x1.78 NBR 70 SH	1
19	AC0009447	Supporto doccia W26x19 H76	1
20	AQ0017134	Flessibile d/agg G3/8" F G1/2" cono L150	1
21	AQ0015375	Doccia Union Ø23 zigrinata	1





WE ARE IB

### **WARRANTY**

All IB Rubinetterie SpA products are warranted for 10 years from the date of purchase, for the following cases:

- Defects of casting, porosity and chrome plating.
- Operating defects caused by incorrect fabrication.

The warranty provides for repair or replacement of products with fabrication defects recognized by our technical office. There is no other type of compensation anche the merchandise must be returned FOB our warehouse. The warranty only cover surface defects (scartches, dings, etc.) on fitting that have not been installed and used, returned in its original packaging with all components. O-ring, gasket seals and components subject to wear proportional to use are warranted for 2 years.

#### **The warranty is void in the following cases:**

Error installing and putting the product into service.

Deterioration of finished surfaces due to use of cleaning products containing acids or abrasive substances.

Deterioration of surface with finishes other than chrome plating. Their durability is, in fact, dependent on the user's care and gentleness of use.

Deterioration of the fitting due incorrect installation.

Improper repairs and maintenance performed without the company's prior authorization.

The warranty from IB Rubinetterie SpA is not renewable.

#### **Cleaning**

We recommanded cleaning the finish surfaces with water and soap, using a soft cloth.

Do not use detergents that cointain hydrochloric acid or abrasive substances.