

Collection

K2

Article

K2299

Description

Monohole free-standing washbasin

Built-in body to be purchased separately INC399

Box Dimensions

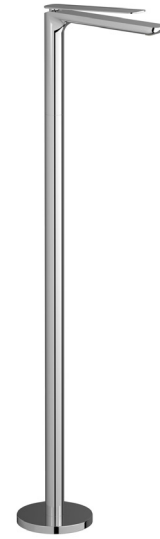
1100 x 188 x 98 mm

Weight

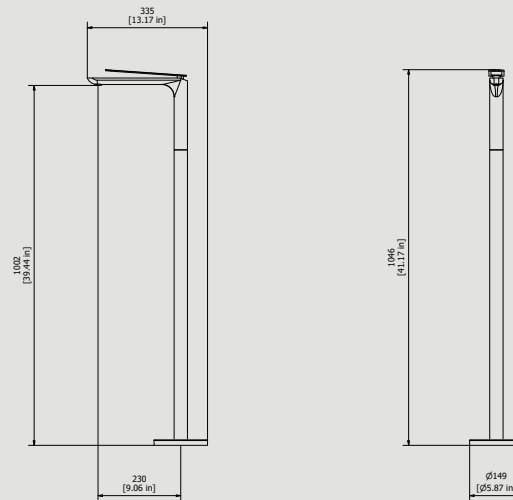
3.3 kg

Finishes

- **CC**
CHROME
- **CF**
BLACK CHROME
- **OO**
GOLD
- **MB**
MODERN BRONZE
- **SS**
BRUSHED NICKEL
- **CS**
BRUSHED BLACK CHROME
- **BO**
MATT WHITE
- **NP**
MATT BLACK
- **IS**
BRUSHED PALE GOLD
- **OS**
BRUSHED GOLD
- **II**
PALE GOLD
- **RR**
ANTIQUE COPPER
- **RS**
ROSE GOLD
- **ON**
NATURAL BRASS
- **SR**
BRUSHED ROSE GOLD
- **PL**
PLATINUM



Dimensions



Cartridge

Ø25 ceramic cartridge

Threaded fitting

G1/2" male

Aerator

M24x1

Flow Rate (+/-10%)

1 BAR 3.9 l/min	2 BAR 5 l/min	3 BAR 5 l/min
---------------------------	-------------------------	-------------------------

Production

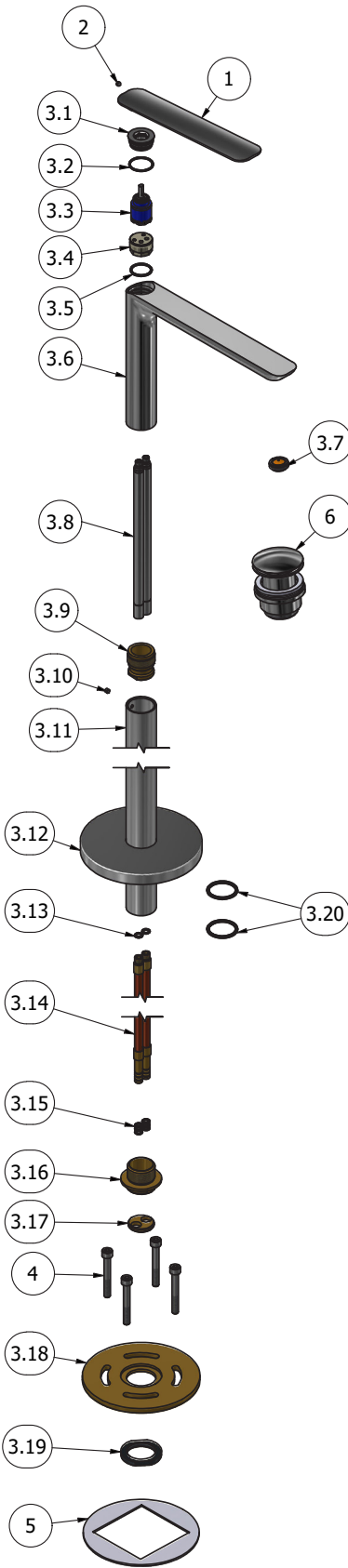
Main body is a single casted pieces

Material

BRASS
According to CuZn35Pb2AL-B (CB752S)
Max Lead content: 1.36%



WE ARE IB



Parts list				
ITEMS	CODE	DESCRIPTION	FIN	QTÀ
1	AQ0014017-TI	Handle L225 H15.2 4°	F	1
2	AQ0009729	Grubscrew M5x5 cone point	-	1
3	CPK2299CC-21	Preassembled basin mixer to floor	F	1
3.1	AC0011883	Cartridge fixing nut Ø32,8 H.14.15	F	1
3.2	AQ0010564	OR 26.7x1.78 NBR 70 SH	-	1
3.3	AQ0016765	Cartridge Ø25 open Ø (KH25OP A4UI)	-	1
3.4	AN0010810	Connection piece Ø27X18	N	1
3.5	AQ0010972	OR 23x2 NBR 70 SH	-	1
3.6	AQ0014067	Mixer body Ø37 H200 L278	F	1
3.7	AQ0013478	Perlator coin slot M24x1 5l/m (45.2051.000)	-	1
3.8	AN0010899	Extension pipe M8x1 M10x1 H230	N	2
3.9	AS0016045	Insert M34x1.5 Ø29.8 H33	G	1
3.10	AQ0009541	Grubscrew M5x4 flat point	-	1
3.11	AC0016039	Pipe Ø37 Ø32 L816 M34x1.5	F	1
3.12	AQ0014730	Carter for cover Ø149 Ø37.5 H15.5	F	1
3.13	AQ0001330	OR 6.75x1.78 NBR 70 SH	-	2
3.14	AS0012380	Pipe M10x1 L790	-	2
3.15	AQ0012025	OR 6.35x1.78 NBR 70 SH	-	6
3.16	AS0016994	Insert Ø50 M36x1 M M34x1.5 M H33	G	1
3.17	AS0016997	Pipe guide M32x1 H5	G	1
3.18	AS0015991	Flange Ø144 Ø36.2 H6.5	G	1
3.19	AS0013152	Nut Ø50 M36X1F H6 CH.46	G	1
3.20	AQ0010221	OR 32x3 NBR 70 SH	-	2
4	AQ0016200	Inox screw TCEI M8x60 DIN912	-	4
5	AQ0015889	Rubber packing double-sided Ø142 H2	-	1
6	AQ0009837	Simple rapid waste 1"1/4	F	1



WE ARE IB

WARRANTY

All IB Rubinetterie SpA products are warranted for 10 years from the date of purchase, for the following cases:

- Defects of casting, porosity and chrome plating.
- Operating defects caused by incorrect fabrication.

The warranty provides for repair or replacement of products with fabrication defects recognized by our technical office. There is no other type of compensation anche the merchandise must be returned FOB our warehouse. The warranty only cover surface defects (scartches, dings, etc.) on fitting that have not been installed and used, returned in its original packaging with all components. O-ring, gasket seals and components subject to wear proportional to use are warranted for 2 years.

The warranty is void in the following cases:

Error installing and putting the product into service.

Deterioration of finished surfaces due to use of cleaning products containing acids or abrasive substances.

Deterioration of surface with finishes other than chrome plating. Their durability is, in fact, dependent on the user's care and gentleness of use.

Deterioration of the fitting due incorrect installation.

Improper repairs and maintenance performed without the company's prior authorization.

The warranty from IB Rubinetterie SpA is not renewable.

Cleaning

We recommanded cleaning the finish surfaces with water and soap, using a soft cloth.

Do not use detergents that cointain hydrochloric acid or abrasive substances.