



WE ARE IB

Collection

# MARMO

Article

## MR397\_1

Description

**Four holes bath filler with overflow outlet connection**

Box Dimensions

**685 x 345 x 168 mm**

Weight

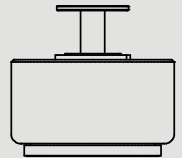
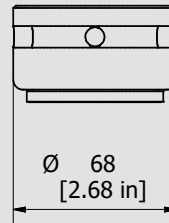
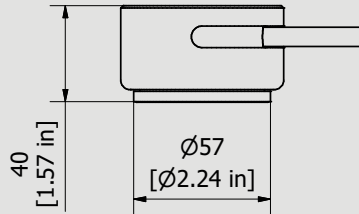
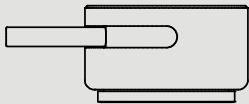
**6.8 kg**

Finishes

- **CC** CHROME
- **CF** BLACK CHROME
- **OO** GOLD
- **BB** ANTIQUE BRONZE
- **SS** BRUSHED NICKEL
- **CS** BRUSHED BLACK CHROME
- **BO** MATT WHITE
- **NP** MATT BLACK
- **IS** BRUSHED PALE GOLD
- **OS** BRUSHED GOLD
- **II** PALE GOLD
- **RR** ANTIQUE COPPER
- **RS** ROSE GOLD
- **ON** NATURAL BRASS
- **SR** BRUSHED ROSE GOLD
- **PL** PLATINUM



Dimensions



Cartridge

**G1/2" ceramic headworks**

Treaded fitting

**Treaded fitting G1/2" male**

Aerator

-

Flow Rate (+/-10%)

**1 BAR  
16 l/min**

**2 BAR  
23 l/min**

**3 BAR  
28 l/min**

Production

**Main body is a machined from a solid pieces**

Material

**BRASS  
According to CuZn39Pb3 (CW614N)  
Max Lead content: 2.5%**

**IB RUBINETTERIE s.p.a**  
via dei Pianotti 3/5  
25068 Sarezzo (BS) - Italy -

T. +39 030 802101  
F. +39 030 803097  
info@weareib.it

P.IVA 01785230986  
capitale sociale  
€420.000,00 i.v.

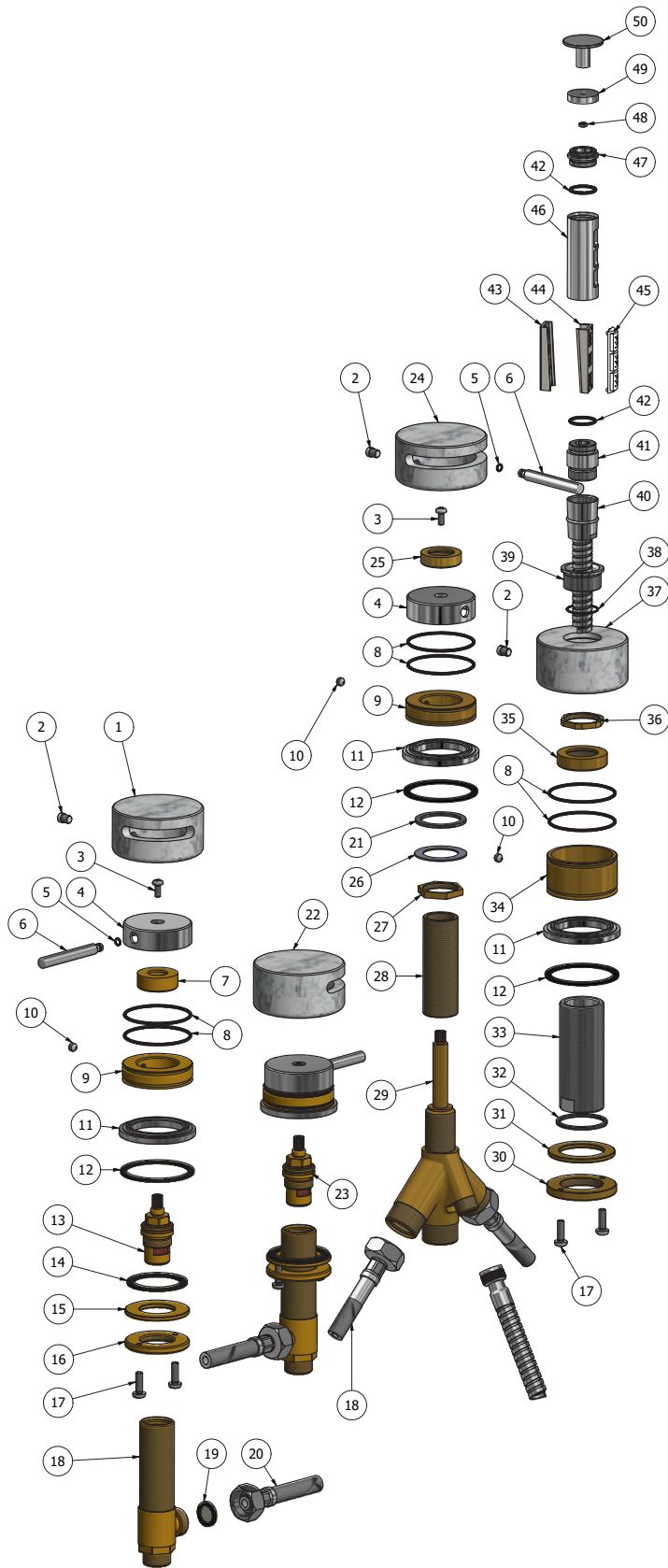
[www.weareib.it](http://www.weareib.it)





WE ARE IB

ELENCO PARTI			
ELEMENTO	CODICE	DESCRIZIONE	QTA
1	AQ0014839	Copertura marmo Ø68 H35 sinistra	1
2	AQ0015557	Vite Ø7.1 M6 H9 bianca	4
3	AQ0002160	Vite inox M4x10	3
4	AC0012459	Maniglia Ø51 H15.5	3
5	AQ0010327	OR 4x1 NBR 70 SH	3
6	AC0012453	Manettino Ø8 M6 H63	3
7	AS0012451	Inserto fissaggio Ø30.3 H11 M24x1	2
8	AQ0001450	OR 47.37x1.78 NBR 70 SH	8
9	AS0012454	Base maniglia Ø52.4 H13	3
10	AQ0013370	Grano inox M6x5 p.c.	4
11	AC0012458	Basetta Ø57 H6.8 Ø39	4
12	AQ0011028	Guarnizione piana Ø55x47x2	4
13	AQ0002135	Vitone ceramico 90° sinistra HOT	1
14	AQ0008013	Guarnizione piana 45x35x2	2
15	AS0010697	Rondella Ø48x26.5x3	2
16	AS0010698	Ghiera W26x19F M5	2
17	AQ0010358	Vite inox M5x16	6
18	AS0002250	Piantana W26x19	2
19	AQ0010360	Guarnizione con filtro G1/2"	2
20	AQ0009553	Flessibile inox G1/2" F G3/4" F L600	2
21	AQ0009716	Guarnizione piana 38x30x2	1
22	AQ0014842	Copertura marmo Ø68 H35 destra	1
23	AQ0003930	Vitone ceramico 90° destro	1
24	AQ0014929	Copertura marmo deviatore Ø68 H35 180°	1
25	AS0012497	Inserto fissaggio Ø30.3 H8.5 26x19	1
26	AQ0001650	Rondella acciaio 39x26.5x1	1
27	AS0002010	Dado W26x19 F H4.5	1
28	AQ0012031	Prolunga per deviatore W26x19	1
29	AQ0012030	Deviatore 2 entrate / 2 uscite con stop (2950)	1
30	AS0010658	Ghiera Ø52 M33x1.5 H6	1
31	AS0010659	Rondella Ø50x33.5x3	1
32	AQ0010274	Guarnizione Ø38x33.5x2	1
33	AS0012498	Supporto doccia M33x1.5 H82	1
34	AS0012452	Basetta bocca Ø52 H28	1
35	AS0012499	Inserto fissaggio Ø37.3 H9.5 M33x1.5	1
36	AS0012500	Dado ES 30 M28x1.5 H4	1
37	AQ0014927	Copertura marmo bocca Ø68 H35 Ø28.3	1
38	AQ0009982	OR 22x1 NBR 70 SH	1
39	AC0012501	Inserto protezione Ø32 M28.1.5 H15	1
40	AQ0009555	Flex d. agg. G3/8" F G1/2" cono	1
41	AC0010699	Attacco flex doccia sede valvola	1
42	AQ0004630	OR 17.16x1.78 NBR 70 SH	2
43	AQ0013936	Pressino a poppette ABS grigio	1
44	AQ0013935	Pressino a riquadri ABS	1
45	AQ0013934	Guarnizione a tappetino riquadro	1
46	AC0011852	Corpo doccia Ø32 H62	1
47	AC0010528	Tappo M20x1 H11	1
48	AQ0014934	Dado esagonale M3 DIN 934	1
49	AC0010529	Tappo superiore doccia	1
50	AC0012509	Pomolo per doccia Ø30 H20	1





WE ARE IB

### **WARRANTY**

All IB Rubinetterie SpA products are warranted for 10 years from the date of purchase, for the following cases:

- Defects of casting, porosity and chrome plating.
- Operating defects caused by incorrect fabrication.

The warranty provides for repair or replacement of products with fabrication defects recognized by our technical office. There is no other type of compensation anche the merchandise must be returned FOB our warehouse. The warranty only cover surface defects (scartches, dings, etc.) on fitting that have not been installed and used, returned in its original packaging with all components. O-ring, gasket seals and components subject to wear proportional to use are warranted for 2 years.

#### **The warranty is void in the following cases:**

Error installing and putting the product into service.

Deterioration of finished surfaces due to use of cleaning products containing acids or abrasive substances.

Deterioration of surface with finishes other than chrome plating. Their durability is, in fact, dependent on the user's care and gentleness of use.

Deterioration of the fitting due incorrect installation.

Improper repairs and maintenance performed without the company's prior authorization.

The warranty from IB Rubinetterie SpA is not renewable.

#### **Cleaning**

We recommanded cleaning the finish surfaces with water and soap, using a soft cloth.

Do not use detergents that cointain hydrochloric acid or abrasive substances.