



WE ARE IB

Collection

# MARMO

Article

## MR399\_2

Description

**Free-standing bath filler**

Box Dimensions

**900 x 470 x 470 mm**

Weight

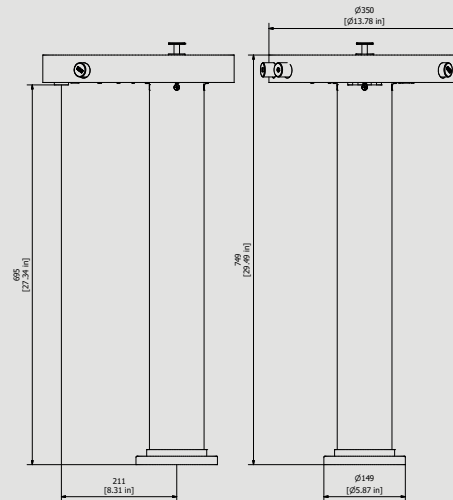
**21 kg**

Finishes

- **CC**  
CHROME
- **CF**  
BLACK CHROME
- **OO**  
GOLD
- **BB**  
ANTIQUE BRONZE
- **SS**  
BRUSHED NICKEL
- **CS**  
BRUSHED BLACK CHROME
- **BO**  
MATT WHITE
- **NP**  
MATT BLACK
- **IS**  
BRUSHED PALE GOLD
- **OS**  
BRUSHED GOLD
- **II**  
PALE GOLD
- **RR**  
ANTIQUE COPPER
- **RS**  
ROSE GOLD
- **ON**  
NATURAL BRASS
- **SR**  
BRUSHED ROSE GOLD
- **PL**  
PLATINUM



Dimensions



Cartridge

**G3/4" ceramic headwork**

Hoses

**Inox hoses G1/2" female 715 mms long**

Aerator

**M28x1**

Flow Rate (+/-10%)

<b>1 BAR</b>	<b>2 BAR</b>	<b>3 BAR</b>
<b>13.9 l/min</b>	<b>19.8 l/min</b>	<b>24.5 l/min</b>

Production

**Main body is a machined from a solid pieces**

Material

**BRASS**  
According to CuZn39Pb3 (CW614N)  
Max Lead content: 2.5%

IB RUBINETTERIE s.p.a  
via dei Pianotti 3/5  
25068 Sarezzo (BS) - Italy -

T. +39 030 802101  
F. +39 030 803097  
info@weareib.it

P.IVA 01785230986  
capitale sociale  
€420.000,00 i.v.

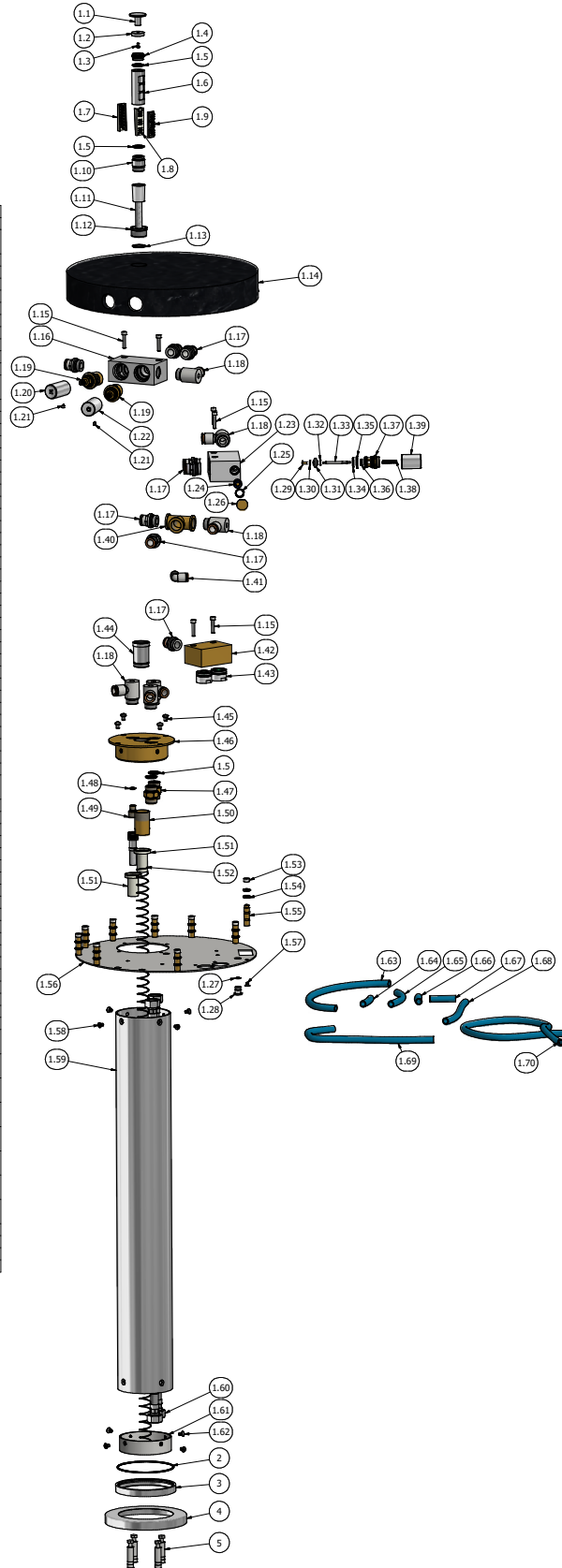
www.weareib.it





WE ARE IB

ELEM	CODE	DESCRIPTION	QT
1	CPMR399C-C-2	Preassembled free standing bath filler	1
1.1	AC0012509	Knob for hand shower Ø30 H20	1
1.2	AC0010329	Upper plug hand shower	1
1.3	AC0012176	Inox screw M5x3 ISO 7046	1
1.4	AS0010528	Connection piece for hand shower	1
1.5	AQ0004630	OR 17.16x1.78 NBR 70 SH	4
1.6	AC0011852	Hand shower body Ø32 H62	1
1.7	AC0013936	ABS gasket support	1
1.8	AC0013935	ABS gasket support	1
1.9	AQ0013934	Gasket	1
1.10	AC0010699	Connection piece for hose	1
1.11	AQ0015040	Hose nylon grey M15x1 G1/2" F cone DN8 L110	1
1.12	AC0012501	Insert Ø32 M26x1.5 H15	1
1.13	AQ0009882	OR 22x1 NBR 70 SH	1
1.14	AQ0014851	Marble cover Ø350 H50 marquinia's black	1
1.15	AQ0010948	Inox screw M5x25	6
1.16	AC0012510	Base for headworks 92x55x38	1
1.17	AS0012511	Connection piece G1/2" Ø12 (2001015)	8
1.18	AS0012512	L connection piece G1/2" Ø12 (2014012)	6
1.19	AQ0009742	Ceramic headwork 3/4" R	2
1.20	ACH012513	Handle Ø26 H45 stamped H	1
1.21	AC0014670	Grubscrew M5x6 cone point	2
1.22	AC0012513	Handle Ø26 H45 stamped C	1
1.23	AC0012593	Base for diverter 60x38x90	1
1.24	AQ0009400	Water drain valve Ø14	1
1.25	AQ0004610	OR 12.42x1.78 NBR 70 SH	1
1.26	AS0012592	Plug Ø20 H15.2 M16x1	1
1.27	AQ0009417	OR 7x1 NBR 70 SH	1
1.28	AC0011087	Connection piece M10x1 H14	1
1.29	AS0011816	Screw M3 L9	1
1.30	AS0011840	Inox washer UNI 6592 M4	1
1.31	AQ0013871	Biconic rubber Ø17x3.75x8	1
1.32	AS0011839	Inox washer UNI 6593 M3	1
1.33	AS0012515	Diverter's rod Ø4 M3 L50	1
1.34	AQ0009818	OR 14x1.78 NBR 70 SH	1
1.35	AQ0004640	OR 18.77x1.78 NBR 70 SH	1
1.36	AQ0013872	Gaco 11.8 X 3.5 NBR 70 SH	1
1.37	AS0011815	Diverter body M21x1 M19x1 L26.2	1
1.38	AQ0014636	Spring De5.4, Dø4.4, Dø0.5, S18, Lo25	1
1.39	ACT012516	Diverter knob Ø26 H35 stamped	1
1.40	AQ0009451	Fitting T G1/2"	1
1.41	AS0012517	L connection Ø12 (2004006)	1
1.42	AC0012518	Base for aerators 70x50x33	1
1.43	AQ0009068	Neutral LP flow straightener - TF size (Ø1.455.00001)	2
1.44	AC0012586	Cover's support Ø30 M27x1 M28x1 H44.5	1
1.45	AQ0010664	Inox screw M5x8	4
1.46	AC0012519	Insert for pipe Ø120 Ø93.8 H33	1
1.47	AS0010301	Reduction G1/2" M G1/2" M with valve seat	2
1.48	AQ0001330	OR 6.78x1.78 NBR 70 SH	1
1.49	AS0012567	Junction M10x1 M15x1 H21.5	1
1.50	AS0012520	Hand shower's support M27x1 H42	1
1.51	AS0012568	Insert Ø30 Ø19 H40	2
1.52	AQ0015039	Spring De21.5, Dø19.3, Dø1.1, S6S, Lo1090	1
1.53	AS0012581	Plug for column Ø10.5 Ø8 H5.5	9
1.54	AQ0009819	OR 7x3 NBR 70 SH	18
1.55	AS0012580	Column Ø9.8 H38.5 M4	9
1.56	AS0012521	Plate Ø330 H42	1
1.57	AQ0013736	Inox screw M4x6	9
1.58	ACL013722	Inox screw M5x8 polish	4
1.59	AC0012525	Pipe Ø100 H700	1
1.60	AQ0014998	Inox hose G1/2" F G1/2" F L715 DN10	2
1.61	AS0012523	Flange Ø94.8 Ø60 H25	1
1.62	AQ0013722	Inox screw M5x8	4
1.63	AQ0014939	Pipe MB longlife polyurethane 98 Ø12x9 L335	5
1.64	AQ0014939	Pipe MB longlife polyurethane 98 Ø12x9 L95 mm	1
1.65	AQ0014939	Pipe MB longlife polyurethane 98 Ø12x9 L150	1
1.66	AQ0014939	Pipe MB longlife polyurethane 98 Ø12x9 L55	1
1.67	AQ0014939	Pipe MB longlife polyurethane 98 Ø12x9 L70	1
1.68	AQ0014939	Pipe MB longlife polyurethane 98 Ø12x9 L250	1
1.69	AQ0014939	Pipe MB longlife polyurethane 98 Ø12x9 L260	1
1.70	AQ0014939	Pipe MB longlife polyurethane 98 Ø12x9 L630	1
2	AC0014965	OR 100x2 NBR 70 SH	1
3	AC0012543	Ring for pipe Ø110 H12	1
4	AC0012522	Round carter Ø149 Ø100.5 H15.5	1
5	AQ0010075	Inox plug M8x60	4





WE ARE IB

### WARRANTY

All IB Rubinetterie SpA products are warranted for 10 years from the date of purchase, for the following cases:

- Defects of casting, porosity and chrome plating.
- Operating defects caused by incorrect fabrication.

The warranty provides for repair or replacement of products with fabrication defects recognized by our technical office. There is no other type of compensation anche the merchandise must be returned FOB our warehouse. The warranty only cover surface defects (scatches, dings, etc.) on fitting that have not been installed and used, returned in its original packaging with all components. O-ring, gasket seals and components subject to wear proportional to use are warranted for 2 years.

### The warranty is void in the following cases:

Error installing and putting the product into service.

Deterioration of finished surfaces due to use of cleaning products containing acids or abrasive substances. Deterioration of surface with finishes other than chrome plating. Their durability is, in fact, dependent on the user's care and gentleness of use.

Deterioration of the fitting due incorrect installation.

Improper repairs and maintenance performed without the company's prior authorization.

The warranty from IB Rubinetterie SpA is not renewable.

### Cleaning

We recommended cleaning the finish surfaces with water and soap, using a soft cloth.

Do not use detergents that contain hydrochloric acid or abrasive substances.

