

Collection

Handshower

Article

SH002

Description

Squarebrass handshower



Box Dimensions

280x130x70 mm

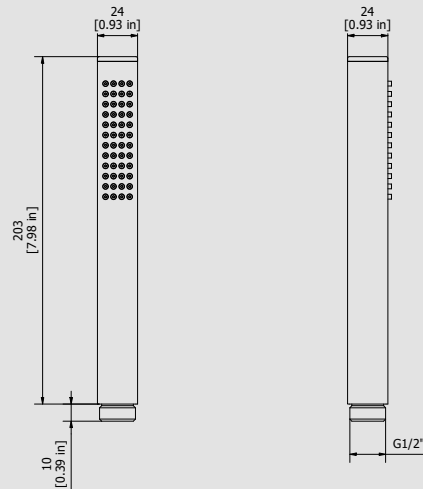
Weight

0.5 kg

Finishes

- **CC**
CHROME
- **PL**
PLATINUM
- **SS**
BRUSHED
NICKEL
- **ON**
NATURAL
BRASS
- **BO**
MATT
WHITE
- **NP**
MATT
BLACK
- **CF**
BLACK
CHROME
- **CS**
BRUSHED
BLACK
CHROME
- **II**
PALE
GOLD
- **IS**
BRUSHED
PALE GOLD
- **RS**
ROSE
GOLD
- **SR**
BRUSHED
ROSE GOLD
- **OO**
GOLD
- **OS**
BRUSHED
GOLD
- **RR**
ANTIQUÉ
COPPER
- **BB**
ANTIQUÉ
BRONZE

Dimensions



Cartridge

-

Threaded fitting

G1/2" M

Aerator

-

Flow Rate (+/-10%)

1 BAR
12.2 l/m

2 BAR
17.6 l/m

3 BAR
21.7 l/m

Production

Main body is a single hot stamped pieces

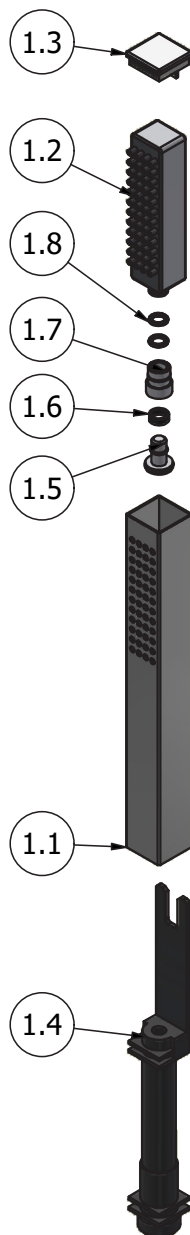
Material

BRASS
According to CuZn39Pb3 (CW614N)
Max Lead content: 2.5%



WE ARE IB

Parts list				
ITEMS	CODE	DESCRIPTION	FIN	QTÀ
1	AQ0013639	Square hand shower OnAir	F	1
1.1	AQ0013639_1	Shower body 23.5x23.5 H200	F	1
1.2	AQ0013639_2	Shower diffuser	-	1
1.3	AQ0013639_3	Plug 23.5x23.5 H7.7	F	1
1.4	AQ0013639_4	Internal soul shower g1/2 "	-	1
1.5	AQ0013639_5	Ø14 H17 valve with O-ring	-	1
1.6	AQ0013639_6	Gasket Ø10 Ø8 H3.5	-	1
1.7	AQ0013639_7	Valve insert	-	1
1.8	AQ0013639_8	OR 6.35x1.78 NBR 70 SH	-	2





WE ARE IB

WARRANTY

All IB Rubinetterie SpA products are warranted for 10 years from the date of purchase, for the following cases:

- Defects of casting, porosity and chrome plating.
- Operating defects caused by incorrect fabrication.

The warranty provides for repair or replacement of products with fabrication defects recognized by our technical office. There is no other type of compensation anche the merchandise must be returned FOB our warehouse. The warranty only cover surface defects (scartches, dings, etc.) on fitting that have not been installed and used, returned in its original packaging with all components. O-ring, gasket seals and components subject to wear proportional to use are warranted for 2 years.

The warranty is void in the following cases:

Error installing and putting the product into service.

Deterioration of finisched surfaces due to use of cleaning products containing acids or abrasive substances.

Deterioration of surface with finishes other than chrome plating. Their durability is, in fact, dependent on the user's care and gentleness of use.

Deterioration of the fitting due incorrect installation.

Improper repairs and maintenance performed without the company's prior authorization.

The warranty from IB Rubinetterie SpA is not renewable.

Cleaning

We recommended cleaning the finish surfaces with water and soap, using a soft cloth.

Do not use detergents that cointain hydrochloric acid or abrasive substances.