

Collection

SHOWER COLUMNS

Article

MA800

Description

Polished steel free-standing shower column

Box Dimensions

1535x220x235 mm

Weight

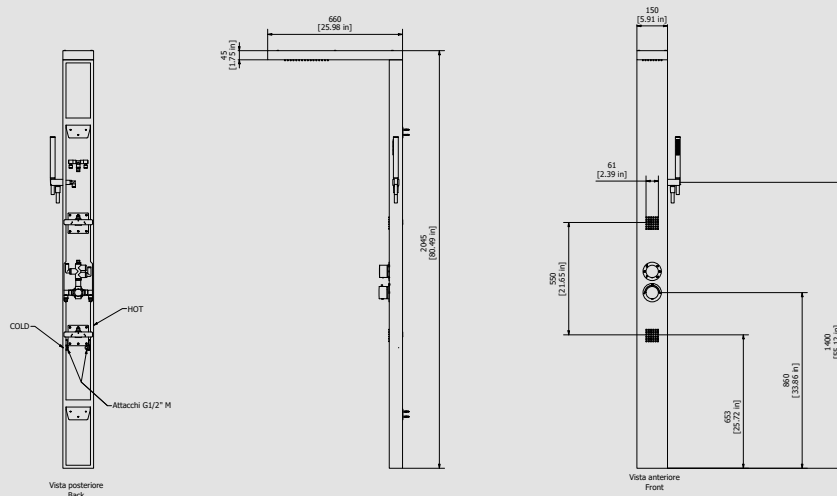
17.5 kg

Finishes

- CC**
CHROME
- PL**
PLATINUM
- SS**
BRUSHED
NICKEL
- ON**
NATURAL
BRASS
- BO**
MATT
WHITE
- NP**
MATT
BLACK
- CF**
BLACK
CHROME
- CS**
BRUSHED
BLACK
CHROME
- II**
PALE
GOLD
- IS**
BRUSHED
PALE GOLD
- RS**
ROSE
GOLD
- SR**
BRUSHED
ROSE GOLD
- OO**
GOLD
- OS**
BRUSHED
GOLD
- RR**
ANTIQUÉ
COPPER
- BB**
ANTIQUÉ
BRONZE



Dimensions



Cartridge

Thermostatic control

Aerator

-

Production

Main body is a single hot stamped pieces.

Flow Rate (+/-10%)

Head Shower

1 BAR	2 BAR	3 BAR
7.2 l\m	6.5 l\m	7.3 l\m

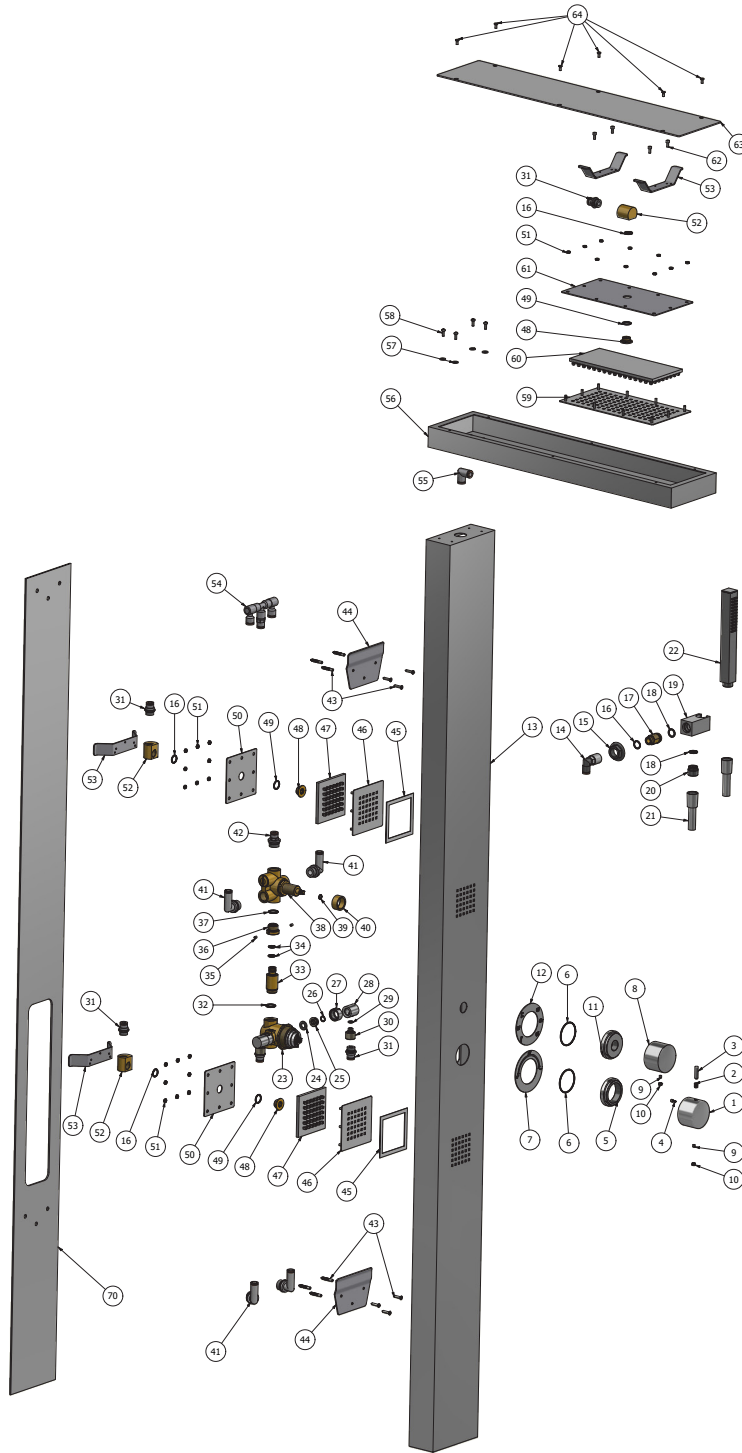
Shower

1 BAR	2 BAR	3 BAR
10.4 l\m	9.5 l\m	10.5 l\m

Body jet

1 BAR	2 BAR	3 BAR
13 l\m	11.6 l\m	13 l\m

ELEMENTO	CODICE	DESCRIZIONE	QTA
1	ACQ011423	Maniglia termo Ø60 H39	1
2	AQ0008086	Molla pulsante termo Ø6 F0.5 L8.5	1
3	ACQ011424	Pulsante maniglia termo H27	1
4	AS0007045	Perno Ø6 H11.6	1
5	ACQ011425	Anello esterno termostatico W45x19 H15.5	1
6	AQ0001450	OR 47.3x1.78 NBR 70 SH	2
7	ACGC11405	Anello Ø90 Ø55 H1.5 °celsius x termo	1
8	ACQ011398	Maniglia deviatore Ø60 H39	1
9	AQ0001100	Grano M5x5 p.p.	2
10	AQ0006650	Piaccetta cromata Ø7	2
11	ACQ011399	Anello esterno deviatore W22x19 H15.5	1
12	ACQ011405-S2	Anello Ø90 Ø55 H1.5 simboli deviatore + off	1
13	AQ0012953	Carter doccia 200x150x65	1
14	AQ0013193	Raccordo a L G3/8" (2L2MF4)	1
15	AQ0000660	Controdado G1/2" PLS H11	1
16	AQ0009818	OR 14x1.78 NBR 70 SH	4
17	AS0011411	Attacco per portadoccia G3/8"	1
18	ACQ001390	OR 14x2	2
19	ACQ011410	Porta doccia 30x30 L60	1
20	ACQ011892	Attacco doccia G1/2" M19x1 H19	1
21	AQ0010066	Flessibili Cromolux	1
22	AQ0013639	Doccia OnAir quadra	1
23	AQ0013244	Termostatico	1
24	AQ0003080	Guarnizione piana 18x10x2	2
25	AN0009332	Sede M15x1 H10	2
26	AQ0010077	OR 12x1.5 NBR 70 SH	2
27	ACQ010193	Dado G1/2" per attacco doccia	2
28	ACQ012349	Attacco curvettata Ø24 M15x1 M10x1 L26	2
29	AQ0001330	OR 6.75x1.78 NBR 70 SH	2
30	AQ0012538	Attacco curvettata H10x1 G3/8" L32	2
31	AQ0013178	Raccordo G3/8" M10 (2L01013)	5
32	AQ0009841	OR 17x2 NBR 70 SH	1
33	AS0011426	Inserto G1/2" H54.5 con innesto	1
34	AQ0011059	OR 12x1.5 NBR 70 SH	2
35	AQ0001081	Grano M4x5 p.p.	2
36	AS0011414	Inserto G1/2" H19.5	1
37	AQ0004630	OR 17.17x1.78 NBR 70 SH	1
38	AQ0013248	Deviatore 3 vie con stop tra le uscite (geb 2330 CT)	1
39	AQ0012025	OR 6.3x1.78 NBR 70 SH	1
40	AS0011402	Anello spessore Ø30xØ24x13.5	1
41	AQ0013181	Raccordo a L G1/2" D10 (2031015)	4
42	AQ0013177	Raccordo G1/2" D10 (2L01018)	1
43	AQ0010061	Pischer	3
44	AQ0013153	Piastrina di fissaggio 118x83x2	2
45	AQ0013436	Guarnizione biadesiva 90x90x8x1	2
46	AQ0013160	Piastra sotto bodyjet 100x100x1.5	2
47	AQ0013186	Ugelli bodyjet silicone	2
48	AS0011403	Attacco G3/8" H10	3
49	AQ0004600	OR 15.6x1.78 NBR 70 SH	3
50	AQ0013161	Piastra sopra bodyjet 100x100x1.5	2
51	AQ0013210	Dado M4 A2 DIN 934	26
52	AS0011406	Attacco G3/8" F F Ø30 L30	3
53	AQ0013229	Staffa fissaggio 140x25x30x2	4
54	CP13946CC-1	Premontato raccordo a T rapido	1
55	AQ0013180	Raccordo a L D10 (2L00A005)	1
56	AQ0013162	Carter tetto doccia 660x1.5x44.5	1
57	AQ0004650	Rondella Ø6.3xØ12.4x1.5	4
58	AQ0010985	Vite testa croce M4x12	4
59	AQ0013171	Piastra sotto soffione	1
60	AQ0013187	Ugelli soffione silicone (BAL 70-40)	1
61	AQ0013172	Piastra sopra soffione 215x130x1.5	1
62	AQ0010381	Vite con esagono incassato M4x10	4
63	AQ0013173	Piastra tetto 650x140x1.5	1
64	AQ0012263	Vite testa esagono esagono incasso M4x10	6
65	AQ0013185	Tubo Rislan PA11 DIN 74324 Ø10xØ8 ATM 18 L492 cm	1
66	AQ0013185-2	Tubo Rislan PA11 DIN 74324 Ø10xØ8 ATM18 L100 cm Dev-tetto / Dev-1 / T-bodyjet inf.	3
67	AQ0013185-5	Tubo Rislan PA11 DIN 74324 Ø10xØ8 ATM18 L80 cm Calda / Fredda	1
68	AQ0013185-3	Tubo Rislan PA11 DIN 74324 Ø10xØ8 ATM18 L43 cm Tetto / Dev-Doccia	3
69	AQ0013185-8	Tubo Rislan PA11 DIN 74324 Ø10xØ8 ATM18 L23 cm	1
70	AQ0013294	Dima 1800x150	1





WE ARE IB

WARRANTY

All IB Rubinetterie SpA products are warranted for 10 years from the date of purchase, for the following cases:

- Defects of casting, porosity and chrome plating.
- Operating defects caused by incorrect fabrication.

The warranty provides for repair or replacement of products with fabrication defects recognized by our technical office. There is no other type of compensation anche the merchandise must be returned FOB our warehouse. The warranty only cover surface defects (scartches, dings, etc.) on fitting that have not been installed and used, returned in its original packaging with all components. O-ring, gasket seals and components subject to wear proportional to use are warranted for 2 years.

The warranty is void in the following cases:

Error installing and putting the product into service.

Deterioration of finished surfaces due to use of cleaning products containing acids or abrasive substances.

Deterioration of surface with finishes other than chrome plating. Their durability is, in fact, dependent on the user's care and gentleness of use.

Deterioration of the fitting due incorrect installation.

Improper repairs and maintenance performed without the company's prior authorization.

The warranty from IB Rubinetterie SpA is not renewable.

Cleaning

We recommended cleaning the finish surfaces with water and soap, using a soft cloth.

Do not use detergents that cointain hydrochloric acid or abrasive substances.