

Collection

AQUARIVA

Article

AV620

Description

Semi-built in showerhead with rain

Box Dimensions

650x650x155 mm

Weight

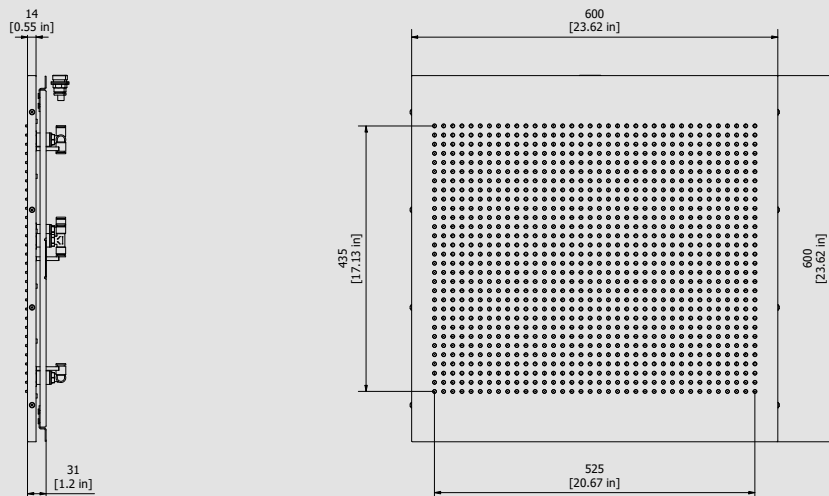
19 kg

Finishes

- **CC**
CHROME
- **PL**
PLATINUM
- **SS**
BRUSHED
NICKEL
- **ON**
NATURAL
BRASS
- **BO**
MATT
WHITE
- **NP**
MATT
BLACK
- **CF**
BLACK
CHROME
- **CS**
BRUSHED
BLACK
CHROME
- **II**
PALE
GOLD
- **IS**
BRUSHED
PALE GOLD
- **RS**
ROSE
GOLD
- **SR**
BRUSHED
ROSE GOLD
- **OO**
GOLD
- **OS**
BRUSHED
GOLD
- **RR**
ANTIQUÉ
COPPER
- **MB**
MODERN
BRONZE



Dimensions



Cartridge

-

Threaded fitting

Threaded fitting G1/2" M

Aerator

-

Flow Rate (+/-10%)

1 BAR	2 BAR	3 BAR
15 l/m	19 l/m	22 l/m

Production

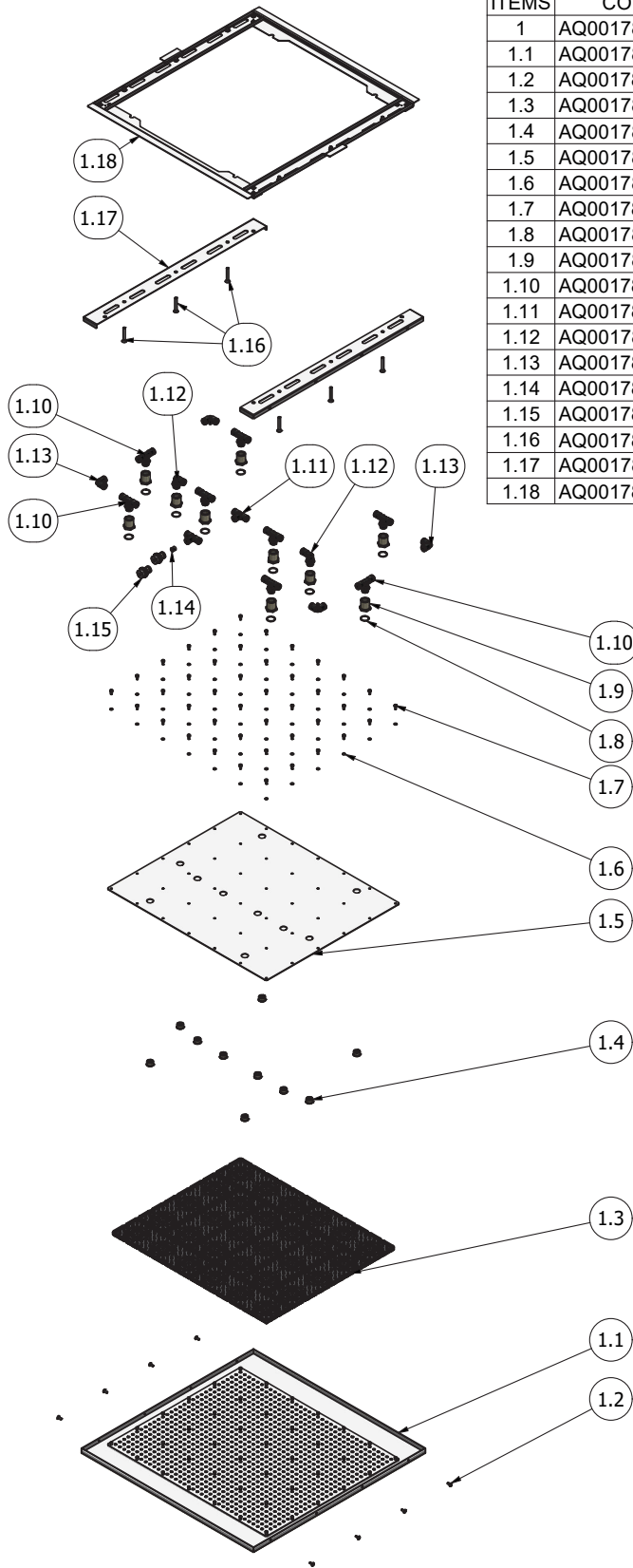
Main body is a single casted pieces

Material

BRASS
According to CuZn35Pb2Al-B (CB752S)
Max Lead content: 1.36%



WE ARE IB



Parts list			
ITEMS	CODE	DESCRIPTION	QTÀ
1	AQ0017899	Shower head 600x600 rain	1
1.1	AQ0017899_1	350 rain shower head box	1
1.2	AQ0017899_2	Screw M4x10 TB with flange Ø9.3	8
1.3	AQ0017899_3	3 modules gasket	10
1.4	AQ0017899_4	Shower head supply connection	10
1.5	AQ0017899_5	NEW closing plate 465x555	1
1.6	AQ0017899_6	Washer for M4 screws DIN 6798 A	42
1.7	AQ0017899_7	M4x8 TCEI UNI 5931 screw	42
1.8	AQ0017899_8	O-Ring 18x2	10
1.9	AQ0017899_9	Shower head connection	10
1.10	AQ0017899_10	Double turn attack. RL32 G3/8" M Ø10	8
1.11	AQ0017899_11	Fox RL5 intermediate T fitting Ø10	2
1.12	AQ0017899_12	Revolving elbow RL31 G3/8" M Ø10	2
1.13	AQ0017899_13	Fox RL21 90° bend Ø10	4
1.14	AQ0017899_14	RILSAN PA12 J7 Ø10 Ø8 pipe	1
1.15	AQ0017899_15	Connection art.801 G1/2" M Ø10	2
1.16	AQ0017899_16	Screw M6x40 TSPEI UNI 5933	6
1.17	AQ0017899_17	Shower head fixing profile with rivets	2
1.18	AQ0017899_18	Bracket with rivets for fixing the shower head	1



WE ARE IB

WARRANTY

All IB Rubinetterie SpA products are warranted for 10 years from the date of purchase, for the following cases:

- Defects of casting, porosity and chrome plating.
- Operating defects caused by incorrect fabrication.

The warranty provides for repair or replacement of products with fabrication defects recognized by our technical office. There is no other type of compensation anche the merchandise must be returned FOB our warehouse. The warranty only cover surface defects (scartches, dings, etc.) on fitting that have not been installed and used, returned in its original packaging with all components. O-ring, gasket seals and components subject to wear proportional to use are warranted for 2 years.

The warranty is void in the following cases:

Error installing and putting the product into service.

Deterioration of finished surfaces due to use of cleaning products containing acids or abrasive substances.

Deterioration of surface with finishes other than chrome plating. Their durability is, in fact, dependent on the user's care and gentleness of use.

Deterioration of the fitting due incorrect installation.

Improper repairs and maintenance performed without the company's prior authorization.

The warranty from IB Rubinetterie SpA is not renewable.

Cleaning

We recommended cleaning the finish surfaces with water and soap, using a soft cloth.

Do not use detergents that cointain hydrochloric acid or abrasive substances.