



WE ARE IB

Collection

MARMO

Article

MR310_23

Description

Exposed parts for manual wall mixer with two ways

Built-in to be purchased separately INC310

Box Dimensions

240 x 215 x 110 mm

Weight

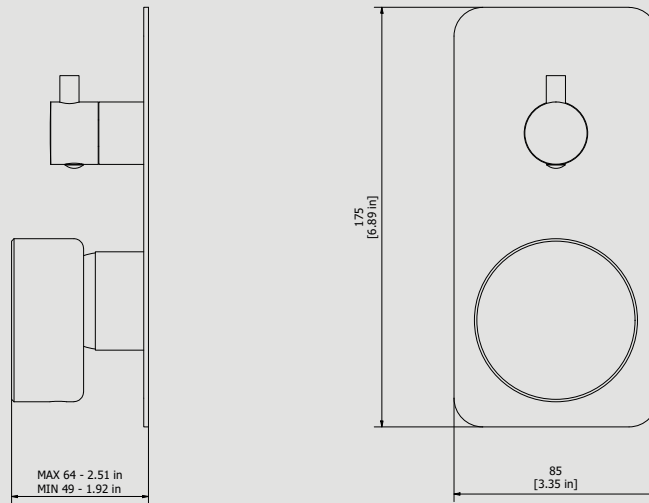
2.4 kg



Finishes

- **CC**
CHROME
- **CF**
BLACK CHROME
- **OO**
GOLD
- **BB**
ANTIQUÉ BRONZE
- **SS**
BRUSHED NICKEL
- **CS**
BRUSHED BLACK CHROME
- **BO**
MATT WHITE
- **NP**
MATT BLACK
- **IS**
BRUSHED PALE GOLD
- **OS**
BRUSHED GOLD
- **II**
PALE GOLD
- **RR**
ANTIQUÉ COPPER
- **RS**
ROSE GOLD
- **ON**
NATURAL BRASS
- **SR**
BRUSHED ROSE GOLD
- **PL**
PLATINUM

Dimensions



Cartridge

Ø35 ceramic cartridges

Treaded fitting

-

Aerator

-

Flow Rate (+/-10%)

1 BAR
11.5 l/min

2 BAR
16.3 l/min

3 BAR
20 l/min

Production

Main body is a machined from a solid pieces

Material

BRASS
According to CuZn39Pb3 (CW614N)
Max Lead content: 2.5%

IB RUBINETTERIE s.p.a
via dei Pianotti 3/5
25068 Sarezzo (BS) - Italy -

T. +39 030 802101
F. +39 030 803097
info@weareib.it

P.IVA 01785230986
capitale sociale
€420.000,00 i.v.

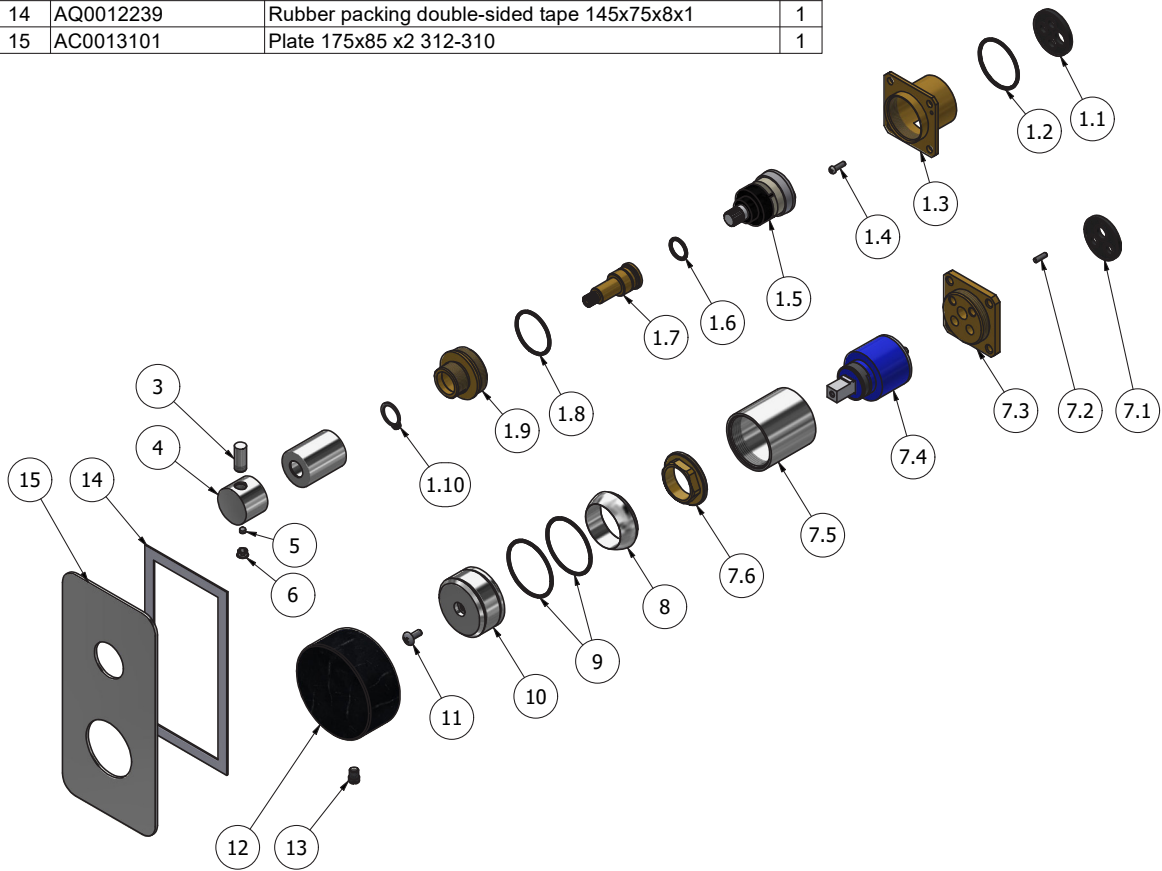
www.weareib.it





WE ARE IB

| Parts list | | | |
|------------|---------------|---------------------------------------------|-----|
| ELEM. | CODE | DESCRIPTION | QTÀ |
| 1 | CPDEV2VCCXN_1 | 90 ° built-in 2-way diverter 48x48 z8x20 | 1 |
| 1.1 | AQ0015686 | Rubber Ø32 H4 | 1 |
| 1.2 | AQ0008026 | OR 33.05x1.78 NBR 70 SH | 1 |
| 1.3 | AS0013047 | Insert 47x47x32 | 1 |
| 1.4 | AQ0012206 | Inox screw M3x10 | 1 |
| 1.5 | AQ0017450 | Cartridge dev. 2 outputs 90° | 1 |
| 1.6 | AQ0004610 | OR 12.42x1.78 NBR 70 SH | 1 |
| 1.7 | AS0013048 | Rod Ø17.9 H42.4 | 1 |
| 1.8 | AQ0010597 | OR 28.3x1.78 NBR 70 SH | 1 |
| 1.9 | AS0013050 | Junction M32x1 M22x1 H23 | 1 |
| 1.10 | AQ0015748 | Seeger ring Ø14 H1 | 1 |
| 2 | AC0013054 | Ring Ø26 M22x1 F H33 | 1 |
| 3 | AC0007092 | Handle knob M8 H19 | 1 |
| 4 | AC0011372 | Diverter's knob Ø26 H20 | 1 |
| 5 | AQ0001082 | Grub screw M4x4 cone point | 1 |
| 6 | AQ0006650 | Plug cover Ø7 | 1 |
| 7 | CPIN206CC-19 | Mixer 47x47 x recessed | 1 |
| 7.1 | AQ0015684 | Gasket Ø31 H3.5 Ø7 Ø7.5 | 1 |
| 7.2 | AQ0015357 | Grubscrew M3x10 flat point | 1 |
| 7.3 | AS0013040 | Insert 47x47 H11 M37x1.5 | 1 |
| 7.4 | AQ0004095 | Ceramic cartridge Ø35 9x9 (K35A) | 1 |
| 7.5 | AC0010445 | Ring for recessed shower mixer | 1 |
| 7.6 | AQ0001040 | Cartridge ring nut M37x1.5 H9 | 1 |
| 8 | AQ0003630 | Cartridge ring nut cover M37x1.5 | 1 |
| 9 | AQ0006415 | OR 37.82x1.78 NBR 70 SH | 2 |
| 10 | AC0012490 | Handle Ø41.9 H20.5 | 1 |
| 11 | AQ0002160 | Screw M4x10 | 1 |
| 12 | AQ0014921 | Marble handle cover Ø68 H30 | 1 |
| 13 | AQ0015558 | Screw Ø7.1 M6 H9 dark gray | 1 |
| 14 | AQ0012239 | Rubber packing double-sided tape 145x75x8x1 | 1 |
| 15 | AC0013101 | Plate 175x85 x2 312-310 | 1 |





WE ARE IB

WARRANTY

All IB Rubinetterie SpA products are warranted for 10 years from the date of purchase, for the following cases:

- Defects of casting, porosity and chrome plating.
- Operating defects caused by incorrect fabrication.

The warranty provides for repair or replacement of products with fabrication defects recognized by our technical office. There is no other type of compensation anche the merchandise must be returned FOB our warehouse. The warranty only cover surface defects (scartches, dings, etc.) on fitting that have not been installed and used, returned in its original packaging with all components. O-ring, gasket seals and components subject to wear proportional to use are warranted for 2 years.

The warranty is void in the following cases:

Error installing and putting the product into service.

Deterioration of finished surfaces due to use of cleaning products containing acids or abrasive substances.

Deterioration of surface with finishes other than chrome plating. Their durability is, in fact, dependent on the user's care and gentleness of use.

Deterioration of the fitting due incorrect installation.

Improper repairs and maintenance performed without the company's prior authorization.

The warranty from IB Rubinetterie SpA is not renewable.

Cleaning

We recommanded cleaning the finish surfaces with water and soap, using a soft cloth.

Do not use detergents that cointain hydrochloric acid or abrasive substances.