



WE ARE IB

Collection

MILANO TORINO

Article

MT801

Description

Thermostatic Shower column.

Box Dimensions

1020x120x490 mm

Weight

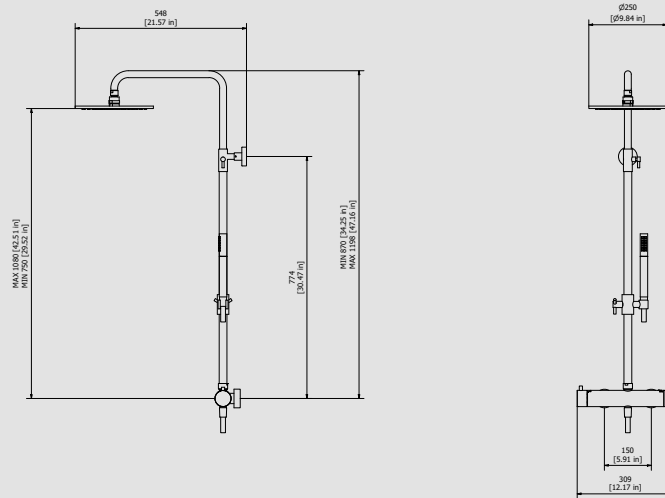
3.40 kg

Finishes

- **CC**
CHROME
- **PL**
PLATINUM
- **SS**
BRUSHED
NICKEL
- **ON**
NATURAL
BRASS
- **BO**
MATT
WHITE
- **NP**
MATT
BLACK
- **CF**
BLACK
CHROME
- **CS**
BRUSHED
BLACK
CHROME
- **II**
PALE
GOLD
- **IS**
BRUSHED
PALE GOLD
- **RS**
ROSE
GOLD
- **SR**
BRUSHED
ROSE GOLD
- **OO**
GOLD
- **OS**
BRUSHED
GOLD
- **RR**
ANTIQUÉ
COPPER
- **MB**
MODERN
BRONZE



Dimensions



Cartridge

Thermostatic cartridge

Threaded fitting

Threaded fitting G1/2" male

Aerator

Flow Rate (+/-10%)

1 BAR	2 BAR	3 BAR
11.2 l\m	17 l\m	21.2 l\m

Production

Main body is a single casted pieces

Material

BRASS
According to CuZn35Pb2Al-B (CB752S)
Max Lead content: 1.35%

IB RUBINETTERIE s.p.a
via dei Pianotti 3/5
25068 Sarezzo (BS) - Italy -

T. +39 030 802101
F. +39 030 803097
info@weareib.it

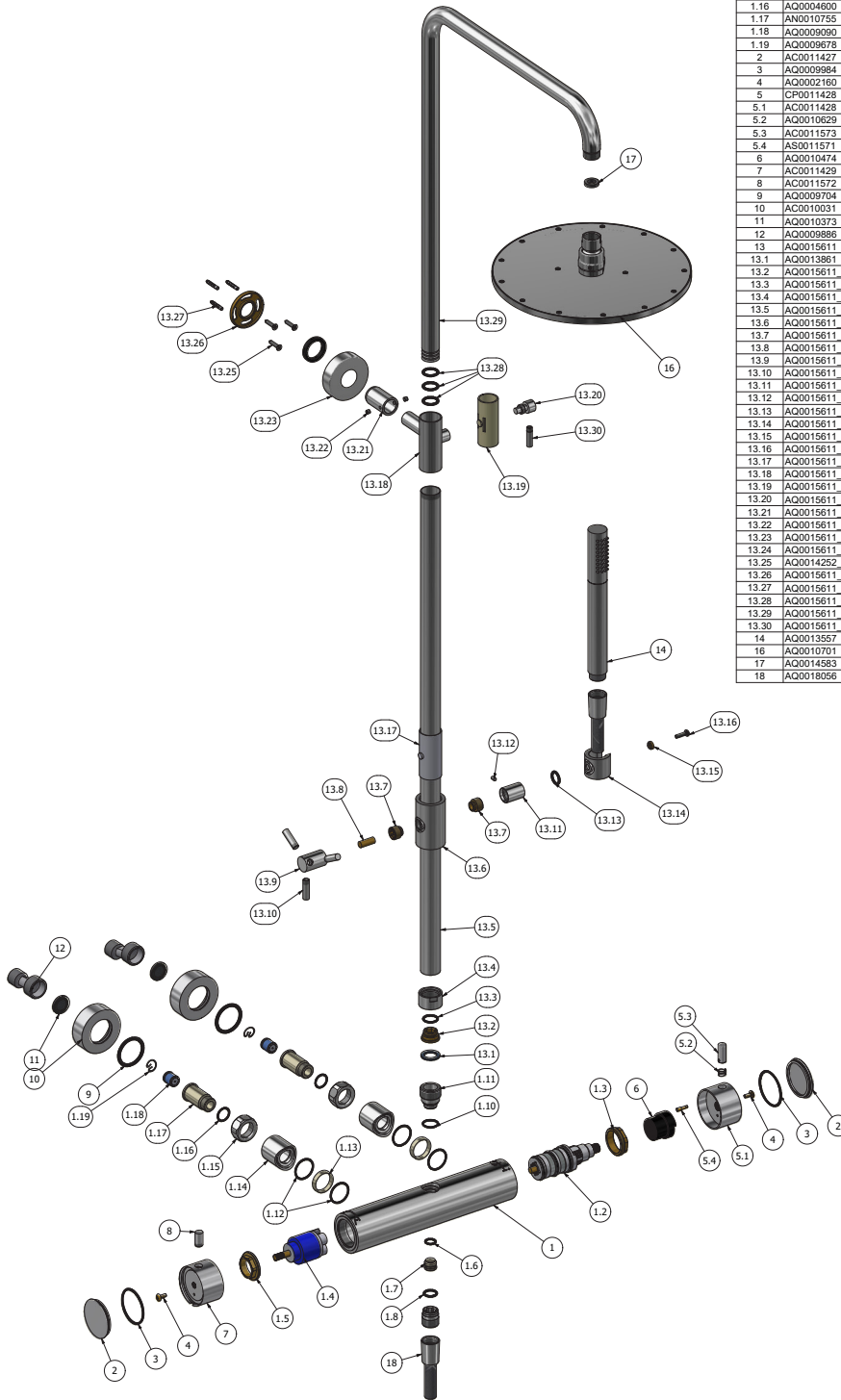
P.IVA 01785230986
capitale sociale
€420.000,00 i.v.

www.weareib.it





WE ARE IB



Parts list			
ITEMS	CODE	DESCRIPTION	FIN QTA
1	CP1981CC-1	Preassembled cylindrical thermostatic int. 150mm	F 1
1.1	CC1001961	Thermostatic faucet body Int. 150 L.250	F 1
1.2	AQ0010089	Thermostatic cartridge CA43	- 1
1.3	AS0010053	Cartridge fixing nut M36x1.25 H10	G 1
1.4	AQ0013249	Cartridge KDZ 35 B 90°	- 1
1.5	AQ0010400	Cartridge ring nut M37x1.5 H9	G 1
1.6	AQ0001350	OR 11.1x1.78 NBR 70 SH	- 1
1.7	AN0009524	Plug 15x1.5 L for thermo	N 1
1.8	AQ0001390	OR 14x2 NBR 70 SH	- 1
1.9	AC0010692	Shower connection piece G1/2"	F 1
1.10	AQ0004630	OR 17.16x1.78 NBR 70 SH	- 1
1.11	AC0010038	Shower connection piece M16x1 G3/4"	F 1
1.12	AQ0006586	OR 25.12x1.78 NBR 70 SH	- 4
1.13	AN0010039	Copper ring for O-ring	N 2
1.14	AC0010037	Chrome cover for seal Ø33 H34.9	F 2
1.15	AC0000710	Fixing nut G3/4" H14 CH30	F 2
1.16	AQ0004600	OR 15.6x1.78 NBR 70 SH	- 2
1.17	AN0010755	Long seal with valve's seat	N 1
1.18	AQ0009090	Not return valve Ø14 (31.4114.00001)	- 2
1.19	AQ0009678	Elastic ring AISI 302	- 2
2	AC0011427	Plug Ø51.4 H8	F 2
3	AQ0009984	OR 43x2 NBR 70 SH	- 2
4	AQ0002160	Screw M4x10	- 2
5	CP0011426	Regulation handle for thermo Ø52 H30.9	F 1
5.1	AC0011428	Thermo regulation handle Ø52 H30.9	F 1
5.2	AQ0010629	Spring for Thermo's handle Ø9.9 H8	- 1
5.3	AC0011573	Thermo handle hub Ø10 H24	F 1
5.4	AS0011571	Pin for thermo lever button	G 1
6	AQ0010474	Temperature regulation stop	F 1
7	AC0011429	Flow regulation handle Ø52 H30.9	F 1
8	AC0011572	Handle knob H19 M10	F 1
9	AQ0009704	OR 32.93x3.53 NBR 70 SH	- 2
10	AC0010031	Sliding rosette Ø59.5 H20	F 2
11	AQ0010373	Rubber packing 3/4" H3 with filter	- 2
12	AQ0009886	Eccentric H.36	G 2
13	AQ0015611	Shower	F 1
13.1	AQ0013861	Rubber packing G3/4" 24x16x3	- 1
13.2	AQ0015611_27	Fixing nut M18x1.5 LH H12	G 1
13.3	AQ0015611_26	OR 16x2 NBR 70 SH	- 1
13.4	AQ0015611_25	nut G3/4" H17	F 1
13.5	AQ0015611_12	Pipe Ø25 H690	F 1
13.6	AQ0015611_17	Pipe for support Ø37 H63	F 1
13.7	AQ0015611_16	Junction M16x1.5 M12x1 H13	G 2
13.8	AQ0015611_15	Insert for fixed Ø8 H21	G 1
13.9	AQ0015611_13	Handle for support Ø20 H31	F 1
13.10	AQ0015611_14	Knob Ø8 H8 H27	F 3
13.11	AQ0015611_20	Junction Ø19.5 H23	F 1
13.12	AQ0015611_19	Grubscrew M4x8 cone point	- 1
13.13	AQ0015611_21	OR 13x2.5 NBR 70 SH	- 1
13.14	AQ0015611_23	Hand shower support Ø32 H28	F 1
13.15	AQ0015611_22	Insert for screw Ø10 H4	G 1
13.16	AQ0015611_24	Inox screw M4x16 ISO 7045	- 1
13.17	AQ0015611_18	Antifriction insert Ø27.5 H63	- 1
13.18	AQ0015611_4	Support body for column	F 1
13.19	AQ0015611_3	Antifriction insert Ø25 H63	- 1
13.20	AQ0015611_5	Pin for support	F 1
13.21	AQ0015611_7	Extension cable Ø24 M22x1M L35	F 1
13.22	AQ0015611_8	Grubscrew M5x4 flat point	- 2
13.23	AQ0015611_6	Rosone Ø60 H15	F 1
13.24	AQ0015611_30	Gasket	- 1
13.25	AQ0014252_7	Self-tapping screw	G 3
13.26	AQ0015611_10	Wall flange	G 1
13.27	AQ0015611_11	Fischer Ø3.5	- 3
13.28	AQ0015611_2	OR 15.88x2.62 NBR 70 SH	- 3
13.29	AQ0015611_1	Upper arm Ø22 H505 L348	F 1
13.30	AQ0015611_29	Rod Ø7 L.27	F 1
14	AQ0013557	Onair hand shower	F 1
16	AQ0010701	Shower head Ø250	F 1
17	AQ0014583	Rubber packing G1/2" H4	- 1
18	AQ0018056	Flex snapon G1/2" F L150cm Silver	F 1

IB RUBINETTERIE s.p.a
via dei Pianotti 3/5
25068 Sarezzo (BS) - Italy -

T. +39 030 802101
F. +39 030 803097
info@weareib.it

P.IVA 01785230986
capitale sociale
€420.000,00 i.v.

www.weareib.it





WE ARE IB

WARRANTY

All IB Rubinetterie SpA products are warranted for 10 years from the date of purchase, for the following cases:

- Defects of casting, porosity and chrome plating.
- Operating defects caused by incorrect fabrication.

The warranty provides for repair or replacement of products with fabrication defects recognized by our technical office. There is no other type of compensation anche the merchandise must be returned FOB our warehouse. The warranty only cover surface defects (scartches, dings, etc.) on fitting that have not been installed and used, returned in its original packaging with all components. O-ring, gasket seals and components subject to wear proportional to use are warranted for 2 years.

The warranty is void in the following cases:

Error installing and putting the product into service.

Deterioration of finished surfaces due to use of cleaning products containing acids or abrasive substances.

Deterioration of surface with finishes other than chrome plating. Their durability is, in fact, dependent on the user's care and gentleness of use.

Deterioration of the fitting due incorrect installation.

Improper repairs and maintenance performed without the company's prior authorization.

The warranty from IB Rubinetterie SpA is not renewable.

Cleaning

We recommended cleaning the finish surfaces with water and soap, using a soft cloth.

Do not use detergents that cointain hydrochloric acid or abrasive substances.